

Spring 2019

ROEHAMPTON VOICE



ISSUE 36

Cover: Sean Darvishi of the Right Place - see page 5

Roehampton Voice: Spring 2019 Edition

Credits for this issue

This issue has been designed by Chris Meadway from the Students' Union of the University of Roehampton, who very kindly allow us the free use of his services. This is his last issue, as he moves away this month.

We'd like to record our thanks to Chris for all the work he's done helping us get the last few issues designed and 'out there', and wish him all good luck for the future.

Events

Please pass us details of your events, for inclusion on our outer back page.

Advertising

Advertising in the Roehampton Voice still represents exceptional value for money. For the very reasonable rates below, you can reach every one of our circulation of 6,150 households throughout Roehampton.

Rates:

£20 for 1/8th page

£50 for 1/4 page

£100 for 1/2 page

£200 for a full page

If you've an event happening between issues: we will be only too

glad to publicise your event on Facebook and Twitter.


Contact us at:


The Editor, Roehampton Voice
Roehampton Trust
80 Coombe Road
New Malden


Surrey KT3 4QS

roehamptonvoice@hotmail.com

(020) 8785 4690

 @RoehamptonVoice

 Roehampton Voice

 www.roehamptonvoice.online

The Roehampton Voice is published as a project of the Roehampton Trust

The deadline for contributions for the next issue is Monday
13th May 2019 – articles and advertisements both.

Publication date early June 2019.

FREE ENTRY - FREE ADVICE - FREE WORKSHOPS

EMPLOY WANDSWORTH 2019

VISIT THE WANDSWORTH
JOBS FAIR

Friday 26 April
10am-3pm

Civic Suite

Wandsworth High Street
London, SW18 2PU



Book your place at:
www.employwandsworth.org

Wandsworth Work Match will be hosting its 4th annual jobs fair on Friday 26 April 2019.

You will have the opportunity to meet with local businesses such as leading national retailers, construction contractors, hospitality companies and many more who are all recruiting within the Wandsworth borough.

Exclusive to Employ Wandsworth 2019 we will have a range of interactive workshops, supported by the Google Digital Garage.

Also attending will be local employment support organisations able to give advice on apprenticeships, specialist training, career development and business start-up.

Visit if you are:

- Living in the borough of Wandsworth
- Currently in education or training
- Looking to find work closer to home
- Seeking employment from entry to professional level

Pre-booking is essential for fast-track entry

In association with





REFLECTIONS ON HOME



**REFLECTIONS ON HOME
BY SARA HEYWOOD & JANE WATT**

Visit the new interactive, site-specific
Soundscape on Downshire Field (Bull Green),
Alton Estate, Danebury Avenue, London SW15

12-4pm
Sat 4 May - Mon 6 May
Sat 11 May - Sun 12 May

www.reflectionsonhome.org.uk

Sound Performance Promenade:
Sat 4 May @ 2pm
Guided Audio Walks:
5, 6, 11 & 12 May @ 2pm

Meet at The Bull Sculpture



An A-choired Taste

Christmas on the Alton Estate got off to a festive start with traditional carols sung by Roehampton's finest choir – "An A-choired Taste" at the estate's annual Lantern Parade.

The choir, led by the Community Development Team from Sheltered Housing, spread yuletide joy accompanied by local children, parents and residents.

The choir is open to anyone over



55 and meets at Minstead Gardens Sheltered Housing Clubroom on Mondays at 1.30pm. Please contact **Simone Farr** s.farr@wandsworth.gov.uk.

gov.uk or Elaine Curley e.curley@wandsworth.gov.uk for more information.

Friendly computer support for older people in Roehampton

Emma Chisholm

Digi-pals is a new service from Age UK Wandsworth offering friendly computer support to older people in our community.

With so much of modern life 'admin' moving on-line, digital isolation is a huge problem amongst older people.

Digipals is a volunteer-run service which offers drop-in sessions in

libraries on different subjects such as 'setting up and using email', 'using the internet to search for information' and 'using social media'. The computer support sessions can also help older people to access relevant information, services and entitlements online and also help them to connect with family and friends. The sessions are drop-in so there is no need to book and people can come once, for help on something specific, or come every week and follow a course!

There will be sessions in Roehampton library once a month and there are also sessions in Southfields, Wandsworth and Tooting libraries.

The next few Roehampton library sessions are March 20th, 24th April, 15th May and 19th June from 10-12 a.m.

Wishing you a Happy New Year – An 'Advertorial' from Sawyer Fielding

Jonathan Nesbitt, Sawyer Fielding

Last month, Regenerate received an unexpected and welcome call from a firm of Chartered Surveyors. Sawyer Fielding chose them as the recipient of a £2,000 donation, part of a larger series of donations totalling £10,000 to various charities across 2018.

Sawyer Fielding chose Regenerate because of the fantastic work they do with the youth in and around the Alton Estate in Roehampton. Their Director Dan Knowles said "we choose charities to donate to based on their impact on the same communities that we serve. The Alton Estate and one of Regenerate's buildings are facing an uncertain future with the threat of demolition hanging over them. My company primarily helps

homeowners who are faced with the prospect of losing their homes to Compulsory Purchase. Regenerate are right in the heart of the Alton Estate where we intend to help as many as possible homeowners.

As someone who has personally lived through regeneration of a council estate as well as worked professionally in them, I see the huge importance of a strong community spirit. What Regenerate do epitomises that community spirit. We hope that this is just the start of a relationship with them.

Andy Smith from Regenerate said "Regenerate has been working on the Alton Estate for 19 years and has seen the areas of need shift and change. The youth unemployment levels have significantly grown and we wanted to support young people

on the Alton Estate find a route to work. Regenerate launched the Feel Good Bakery in 2014 alongside the Get working programme that has helped over 32 young people find employment. With the Support of Sawyer Fielding, we were able to continue growing the Get working programme, and in return we see young people make a difference in their lives and their community."

Strength in numbers can make a huge difference when negotiating on behalf of homeowners affected by the threat of Compulsory Purchase. If you're a homeowner under threat of Compulsory Purchase and would like to talk to us, please call 020 3011 5300.



The Right Plaice Is Exactly That!

An interview with Sean Darvishi of the Right Plaice

The Right Plaice has so much become a feature of Roehampton's townscape that it's impossible to imagine the place without it there. In fact, so iconic of the Alton Estate has it become, that we can easily forget that throughout its existence of over two decades, it has been underpinned by just one man: its owner, Sean Darvishi.

So let's take a brief look at Sean's life and times here with us.

Enthusiasm and optimism are keynotes of Sean's meeting with me. Sean has been based in Roehampton for over two decades now: he thinks it's "a beautiful place, with plenty of green spaces and it is central to many, many places. Barnes, Wimbledon, Richmond, Putney".

What Sean's found is that for him over the years, "The demographics of the whole area have changed: a lot of properties are now occupied by several different tenants, and there is a constant flow of people in and out. There's a lot of new faces."

Sean is a postgraduate in management studies. After gaining his qualification he worked as a business adviser for a number of businesses, and eventually put these skills into practice in his own business. He's been the owner of the Right Plaice for two decades. "More than two decades!", he reminds me. He bought it from its previous owner, and he's been running it ever since.

His was the first food shop to be established here in Roehampton. "When I came here, there was no chicken shop, no Subway, no café. You can put that down, I'm the original!"

He's fiercely proud of his shop and restaurant. He says, and the many awards up on the walls bear him out: "We've always won many awards, as you can see: from RH, the University;

we've been on Radio Jackie news – we're always being recommended."

This led to him setting down firm roots in the area. As he says, "One thing led to another, you acquire responsibilities in life, you begin to know the local people, you become their friends, they become close friends."

I ask, what lies ahead for the Right Plaice in the regeneration? He tells me that there is no timetable, nor so far are there any alternative premises on offer. He would remind the planners that businesses like his should not be forgotten in their role as builders of the community, not to mention that he has been here for so long and given such good service to the community.

Apart from himself, Sean's business employs four people, and uses the services of many suppliers, thus boosting the wider economy.

As far as the regeneration goes, as in life itself, he says "I'm very optimistic, I always look on the good side – I don't want to say 'Bright Side', that's copying



somebody else! I say, This is it, and then I hope for the very best."

Sean was offered a place on the Roehampton Partnership, but he was unable to take this offer up, but is always available to chat, and offer his advice and ideas to the Partnership.

After chatting, Sean proudly shows me his awards – see the photos.

He finishes by saying "I wish and hope the best for everybody." Sean is indeed a nice guy, and we wish him all the very best and another twenty years – more than twenty years! – running the Right Plaice, here in the heart of the Alton Estate.



Roehampton Playing Fields Community Trust

On February 11th of this year, Wandsworth Borough Council's Executive Group responded to the many objections raised over the last year by Playing Field users and the community and has agreed to terminate the current procurement. The Council has now pledged to work, through close consultation, with the community to plan a vibrant, inclusive and sustainable future for Roehampton Playing Fields.

With the benefit of strong and effective support for the Trust from Justine Greening MP and Councillor Steffi Sutters, the Trust is poised to deliver its exciting vision for the Fields, for the benefit of users and the community.

Following consultation in the coming months, engaging existing users, residents and the wider community, the Trust will participate in the tender process later in 2019 with the ambition that the future management and operation of the Playing Fields is for and with the community.

The Trust's tender will focus on the added value it can bring to this valuable but under-utilised community resource, and the enduring benefits it is committed to creating for all members of our diverse community

The Roehampton Playing Fields Community Trust comprises all the principal users of the Fields: Doverhouse Lions Youth and Disability FC, St James' Cricket Club, Nasir Cricket Club and Putney primary schools, all the neighbouring residential groups (Dover House Estate Residents' Association, Westmead Conservation Area residents and residents of Queen Mary's Place), local amenity groups such as the Putney Society and other local organisations and charities. These are all represented on the Trust Stakeholder Board chaired by Justine Greening, MP for Putney, Roehampton and Southfields, who welcomed the new developments:

"For the past year I've chaired the Roehampton Playing Fields Community Trust meetings. This is a group of local residents and Playing

Field users who have come together to form the Trust and develop plans for how the Roehampton Playing Fields could be better run with involvement from our local community.

There's been some great work from the Trust to bring in all sorts of local groups and residents that are keen to see how they can get more involved with using the Playing Fields. It's been crucial to have our West Putney councillors involved and helping out too, including Councillor Steffi Sutters. We're now delighted that the Council has agreed to open up a new process for how the Playing Fields are run and looked after so that our Trust can put its proposals forward. There'll be a consultation first, and I'll keep residents updated on that."

The Trust is very grateful to all the local volunteers, and also to Steffi Sutters and Justine Greening, for their support and confidence. The real hard work starts now and the Trust will need even more enthusiastic local community members to enlist in their efforts to make the Fields a sustainable and viable asset for many years to come. If you would like to get involved and to help the Trust, or just to find out more, then please contact info@roehamptonplayingfields.org

The Trust welcomes this opportunity to be involved in a consultation and to tender for the running and development of the Playing Fields. The Trust has already achieved a great deal and has a firm base from which to finalise its plans, including the raising of initial pledges of community funding totalling £200,000, production of a thorough, robust and sustainable business plan, and full liaison with and galvanising of the local community and users within the Community Trust to save the Playing Fields.

If you wish to keep up to date on all the developments then please follow, like and share us on

Twitter [@roehamptonPF](https://twitter.com/roehamptonPF)

Facebook [@roehamptonplayingfields](https://www.facebook.com/roehamptonplayingfields)

or checking regularly on our website

roehamptonplayingfields.org/



Roehampton Community First Panel - Roehampton Trust

FUNDING AVAILABLE

Application forms from:

communityfirst@roehamptontrust.org.uk

or 020 8785 4690

or Roehampton Trust, 80 Coombe Road, New Malden, Surrey KT3 4QS

Roehampton Local Priorities – projects for:

- Improvement of the visible environment e.g. public gardening, better spaces
- Increase leisure and health well-being activities e.g. sports, walking
- Develop communications, connections and participation e.g. newsletter
- Events to raise community spirit across all age groups e.g. festivals, clubs
- Activities to increase employment and volunteering e.g. bicycle repair unit

Funding available and Timetable

- Project maximum £1,000
- Applications in by Wednesday 24 April 2019
- Presentations evening Thursday 2 May 2019
- Decisions by Wednesday 8 May 2019

In Memoriam: Reverend Jim McKinney

Editorial Board

On the night of Thursday 17th January, the Rev James (Jim) McKinney passed away peacefully. We extend heartfelt condolences to his wife, Sue, and to his children Ruth and Alex, and we assure them of our prayers.

Life Before Roehampton

Jim started his working life started as a computer programmer, but after taking an MA in Theology at the University of Hull, he was ordained in 1978.

His first parish was in South Yorkshire, where he remained for nine years, until 1987. His next change of career – much less weighty than that from programming to the Church of England! – was to take up an appointment as both chaplain and lecturer at the Police Staff College, Bramshill, where he taught Ethics, Counselling and Management Development for senior officers. Whilst there Jim was the founder and went on to become the first co-ordinator of the National Association of Chaplains to the Police.

However, in his own words, “I was aching to get back to parish life”, and so he resumed his ministry in Cumbria, being the vicar to four urban parishes in Cumbria, serving the nuclear power plant at Sellafield. This was in 1992, and after four years there, he came to serve as the vicar at Holy Trinity Church here in Roehampton in 1996.

Life In Roehampton

Throughout his time as vicar in our community, Jim has been involved in social issues and community development via active participation in a large number of organisations.

He was in at the start of the Roehampton Forum and of the Roehampton Partnership, part of the Wandsworth Local Strategic Partnership, focussing primarily

on regeneration in the Borough, serving as Chair of the former over many years, and as Vice-Chair of the latter up until now.

He has also served for the last twelve years as the Chair of the Wandsworth Community Empowerment Network which enables ‘hard to reach’ groups to gain access to health, mental health, advice and support provision.

On the educational front, Jim has been a Council Member of the University of Roehampton, and a governor of the University’s Whitelands College.

By virtue of his position as officiating minister of the ecclesiastical parish of Holy Trinity, Roehampton, he has also held ex-officio the position of Roehampton Church School Foundation Governor.

Jim was also a Christian socialist, which perspective led him in time into active membership of the local Labour Party. He stood as a candidate for that party in West Hill ward in 2014, and in West Putney ward in 2018.

Home Life

It was whilst Jim was working at the Police Staff College at Bramshill that he married Sue, and it was there that their children, Ruth and Alex, were born. Jim credited Ruth and Alex in their young adult years with rekindling his enthusiasm for live music and dance, particularly folk music. His other interests included Local History and the Pre-Raphaelite Brotherhood, whose influence can be seen in every part of Holy Trinity Church.

Remembrance

A short vigil service of readings, prayers and reflections was held by the Area Dean on Thursday 24th January in Holy Trinity Church, Roehampton. Such was Jim’s popularity that row upon row of pews were filled with people who had come to pay their respects to him.

This was followed by Jim’s funeral on 1st February at Roehampton Holy Trinity Church, where he had served for so long himself. It is no exaggeration to say that that big church was filled to overflow, with standing room only available for the last mourners to arrive.



Reverend Jim McKinney

66 Alton Road – the planning application is back !

Steve Fannon

Sadly, by the time you read this, the time for comments on the latest planning application for 66 Alton Road (2018/5671) is closed. However, it is worth highlighting all the same due to the continued piece by piece challenges that local residents face and ultimately have to address with little to no assistance from Councillors or

the Council, and in this instance the challenge is car parking. This proposal is for nine new flats (5 x 1 bed, 4 x 2 bed) with no car parking provision. The Heathmere Schoolkeeper's building of six new flats is almost opposite this new proposal is almost built, and has no car parking provision either. And to this that Pocklington Court (2018/0272) application was

granted and that former ward Councillor Peter Carpenter stated at the Planning Application Committee that he "had requested that his opposition to the development on the grounds that it was too large for the site, be conveyed to the Committee". Three developments in one small length of road with possible have large consequences for locals.



Let's try to list the consequences – (1) more cars parked on Alton Road might lead to problems for buses snaking their way through the estate; (2) more people on buses making it challenging for those that take the buses later in the journey; (3) more intense competition for car parking places; (4) buildings with no car parking provisions might seek to use the nearest car parking areas such as Hyacinth Road and Arnewood Close; (5) difficulty for parents dropping their children off/or collect them at Heathmere School, and (6) Heathmere School challenged in providing car parking spaces for its teachers. There are more consequences though we can't make this a thesis?! Is it too much to ask for oversight of all these planning applications on an aggregated basis rather than by chipping away at residents piece by piece?

Steve Fannon,

roeregeneration@yahoo.com

Alton Leaseholders Update

Nieves, Chair of Alton Leaseholders

The Alton Leaseholders Association (ALA) have been busy the last few months, trying to fundraise to get legal representation for the hearing at the First Tier Tribunal. It is no secret most of the leaseholders oppose the retro-fitting of sprinklers in their tower blocks. The Alton Leaseholders want people not only to think about the cost (which is important), but also about the installation and potential mess it will create.

Installation will take months of hammering, drilling through concrete walls, and the pipework will intrude into your lounge, kitchen and bedrooms depending of the layout of the flat. Pipework will be visible around the block but will be boxed in inside the flats. Residents may need to stay home for up to 5 days for the installation and we all know about the snagging so it may be more, plus you will have to be at home every year for their annual inspection.

We have spoken to many leaseholders and Council tenants, who believe that sprinklers are totally unnecessary in the concrete blocks on the Alton Estate. The blocks have proven their safety over 60 years.

If you would like to help with funding, petitions or door knocking please contact the Alton leaseholders at

altonleaseholders@yahoo.com

Shadowing from the regeneration new builds

Steve Fannon, Chair – Alton Regeneration Watch

The discussions had recently regarding the heights of the proposed buildings in the regeneration have started to gather a lot of attention as they did with the previous regeneration attempt. The following comments relate to Stuart King's Labour 'What Roehampton Wants?' survey. In the survey it stated "The buildings the Tories want to build will be too high. While Allbrook House is 9 storeys, all the surrounding buildings are of a human scale: 3 or 4 storeys along Danebury Avenue. Having all but a couple of buildings 5 or 6 storeys high will make Danebury Avenue darker, more like a canyon and could make the area bleak and windswept" (page 4). In the survey results the following was stated "The Alton Estate is an

area containing many high-rise buildings, albeit spread across a large area and interspersed with open space and greenery. Although the Council's plans demolish one such building - Allbrook House - all the other replacement buildings will be higher - up to six storeys high - than those there currently. In our survey, residents came out strongly against taller buildings: just 4% wanted buildings more than two storeys taller than those there now and 86% said they should remain the same or be smaller than the existing Danebury Avenue streetscape". With Labour having a clean sweep at the last two local Council elections, the question has to be asked, "How did we get to the current proposals?"

Shadowing has been raised as a concern and on the ARW Twitter

there is a video of a shadow from Allbrook House which casts a shadow across Roehampton Lane - <https://twitter.com/AltonWatch/status/1089122197438910465>. Imagine what might happen with more tall buildings?! For those of you interested in having a look at how the shadows from the new buildings may appear, take a look at the website www.suncalc.org, though you might have to guess a bit (or you can ask for missing information from the Councillors to try make it more accurate?)

Councillors: is this legacy that you are prepared to leave us, the residents?

ARW webpage:

www.altonwatch.org.uk/

Regeneration: the delay goes on And on !

John Horrocks

Last November's meeting of the Roehampton Partnership was given an assurance by the Redrow representative at the meeting that the planning application proposing the regeneration of the Alton Estate would be made 'at the end of January 2019'. Well, January came and went - and no planning application appeared.

This follows repeated promises by Redrow (the borough council's development partners in the regeneration project), and the council, about the submission of the application. The delay just goes on, and on, and on!

We were told in 2017 that the planning application proposing the redevelopment would be made in February 2018. It wasn't. Then, last June, we were assured that the application would be made 'in the autumn'. It wasn't. Then came the promise of 'late January 2019. Yet another promise broken!

Neither Redrow nor the council are offering any explanation for their failure to produce the expected planning application - which makes the delay seem all the more curious.

How unsettling this all must be for those Roehampton businesses and families who occupy premises expected to be demolished under the redevelopment process. It is not fair that they should be faced with the uncertainty that the delays are causing.

A likely reason for the delays could be that Redrow's redevelopment proposals have moved on significantly from the council's own regeneration proposals as set out in the 2014 Master Plan and the subsequent Supplementary Planning Document, produced by the council to spell out their proposals in a more formal planning policy framework. Redrow's more recent plans have been criticised for being too dense, too tall, failing to provide the expected amount

of affordable dwellings and being generally out of character with surrounding development. It is hard to find anyone in Roehampton willing to speak in favour of Redrow's current proposals.

It may be, therefore, that the council has been warning Redrow that their proposals are unlikely to get borough council support. 'Go back to the drawing board' could be the advice that has been given to Redrow over recent months.

We are now being told that the planning application may be submitted 'by Easter'. On past form, this must be taken with a pinch of salt!

Why doesn't the council come clean and explain just what is going on?

Are generations to be left behind in the Alton Estate Regeneration?

Claire Gilbert, Councillor

2019 will be a big year for Roehampton. By April we should finally see the planning application from Redrow PLC for the proposed "Regeneration" of the Alton Estate. In March we should see a consultation on the proposed development on Fontley Way.

New homes and investment for the community in Roehampton are long overdue. The majority of the issues raised with Councillors by residents relate to their homes – overcrowding & years in temporary accommodation, no idea how long "temporary" will be. People are suffering behind closed doors.

The housing crisis lies in the failure to invest in more council homes – which we know eventually pay for themselves!

Public Health reported in 2018 that 30% of the Alton Estate is overcrowded. There is a similar problem on the Lennox and Woking Close estates. Levels of homelessness and temporary accommodation increase every year. These problems harm the health of children and adults, and affect everyone in a community. Personal relationships and attainment at school suffer. What is the link with crime & victimhood? Well - where can young people go for space to work or simply rest? "Their" bedroom? A local Youth Centre, if there is one? The library, if it's open? The streets?

These families are good citizens who are being sorely let down. They include people who had to be rehoused because they stood up in

Court as witness. Many are working households. They bring up their children well and they are keen to participate in the community.

The homes pictured are a very long way from the lifestyle enjoyed by residents in the rest of Putney and Wandsworth. The current Putney MP talks about social mobility - yet she and her Conservative colleagues who run the Council are quick to say that social mobility is not linked to housing.

So why are so many people living in this way in Roehampton, which has one of the biggest council estates in the UK? One reason is the sale of council homes under Right to Buy (RTB). RTB was aggressively pursued by the succession of Conservative-led Wandsworth Council since the 1980s. RTB is not in itself to blame; it is the failure to replace those sold-off homes - particularly to replace them with genuinely affordable like-for-like properties (3 bed for 3 bed etc).

In London 102,480 Council homes were sold since 1998, and only 3,000 built. Many Councils now rent or buy back council homes they sold off. Housing someone in the private rented sector costs an average £110 p/w in housing benefit compared with £89 in social housing – 23% more. According to the Mayor's office, "If every housing benefit claimant in London who lived in the private rented sector lived in a council home instead, there would be a saving of £938,810,772 per year in housing benefit".

The current Council proposal for the Regeneration is to build around 850 new "market priced" homes. A 3 bedroom flat is likely to cost around £650,000. This is totally out of reach to most local people. The Council says it will add 30 "affordable" homes though!

As the true details of the proposed Regeneration become clear, the Council must account

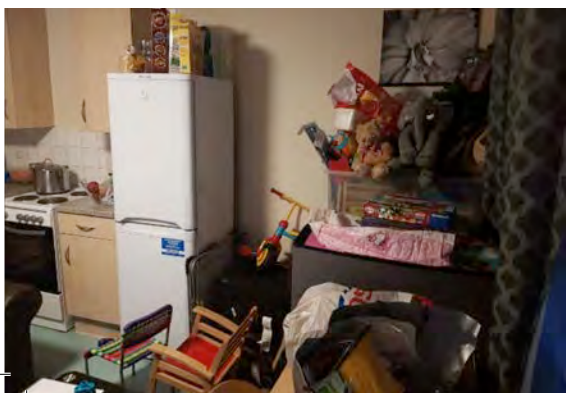


for its political choices in this "Regeneration", which increasingly delivers high-priced homes, and as few new council homes as possible. Local people's views and needs are low on their list of concerns.

A few brief facts on the financial aspects of this issue: The Mayor of London has a fund which could put tens of millions of pounds into Roehampton to help provide more genuinely affordable homes. BUT - Wandsworth Council will not apply for this money. Neither will they use new borrowing rules which its own government brought in last year to build social housing!

Wandsworth Labour would take a very different approach to the entire "Regeneration". We would do everything we can to provide the council homes people need. As a minimum, we call for the Council and Redrow to use the funding available to put at least 70 additional council homes into the proposed Regeneration. This is a modest ask, but achievable. We are also calling for improvements in community investment, transport, design, open spaces and protection for current residents. We would aim much higher for the people of Roehampton.

The magnificent world-renowned Alton Estate will see its 70th anniversary in 2022. We would like to see a great celebration of the Alton Estate, in all its beauty, and for any development to be worth the years of building and disruption for current residents. But as things stand, local people are being left behind by this "Regeneration".



11

Roehampton Students' Union Help Our Chickens

Celia Briseid, Growhampton Project Manager

The Growhampton Chickens have been part of the University of Roehampton's campus for over four years now, and we are very proud to house such happy and healthy animals. We have recently adopted two hens from Eastwood nursery down the road, and rescued 4 battery hens from going to slaughter at only 72 weeks. They are happy as ever, especially now when spring has sprung and we have allowed them to be let outside their enclosure again.

There is one slight issue though. The chickens enclosure is in need of some serious repair work, especially a new roof as the current one is

leaking heavily. Our team cannot afford this without your help.

Our students have done an amazing job, fundraising £300 towards the repairs, but we are still in need of a bit more. So now, one of our amazing students, Hillary, is running the London Marathon in April and to show her support, she will be running it in a fancy chicken outfit whilst fundraising for the chickens. This will be Hillary's fifth marathon, and she hopes that the training and the run itself will go as smoothly as the last four and that she will make it to the finish line – we think she will!

The campus is open for anyone to come and see the beautiful grounds, and we would encourage everyone to stop by and say hello to our lovely ladies, and why not pick up a hot drink and a treat from the Hive Café whilst you are there!

To help support Hillary's fundraising, please consider giving a donation via her JustGiving page:

[justgiving.com/crowdfunding/growhamptonchicken](https://www.justgiving.com/crowdfunding/growhamptonchicken)

/ THE HIVE CAFÉ

OPEN TO ALL // ROEHAMPTON UNIVERSITY

The Hive Café is a unique venue at Roehampton University that enables organic, ethical and local food to be both affordable and accessible. It is the social enterprise element of the Growhampton programme. The café is built out of repurposed shipping containers and provides a relaxed space to get away from it all.

THE ONLY INDEPENDENT CAFE ON CAMPUS, AND IT'S RUN BY THE STUDENTS' UNION.

We are a social enterprise so every penny you spend goes to the continuation of Growhampton, our edible campus and sustainable food project.

BEST COFFEE ON CAMPUS, MADE WITH LOVE

BREAKFAST MENU

HOMEMADE PASTRIES

HOT & COLD MEALS MADE FROM SCRATCH

VEGAN & GLUTEN FREE OPTIONS

THE FEEL GOOD BAKERY SANDWICHES

SMOOTHIES & COLD DRINKS

VOTED BEST FOOD OUTLET ON CAMPUS

THE HIVE CAFE
HOME OF GROWHAMPTON

OPEN 8.30AM - 4.00PM
DIGBY SQUARE

Roehampton Voice (Issue 36) Home.indd 11

05/03/2019 12:11

Weekly events

Knit & Sew

Alternate Wednesdays // 2:00 – 4:00 pm

All ages, skills and levels!

Friendly, fun, informal

Roehampton Library, Danebury Avenue

Kickboxing

Every Tuesday // 6:30 – 8:00 pm

Contact Mark Smith 07732 837 777

First session free

Newlands Hall, 226 Stroud Crescent,

Putney Vale, SW15

Stay and Play session

Wednesdays // 10 – 11.30 am

for children 0-5 years and their adults

Free, health worker also present

Run by Eastwood Centre

020 8871 5544

Health worker: 0330 058 1679

Newlands Hall, 226 Stroud Crescent

Chair-based Exercises for People with a Disability

Tuesdays // 2 classes // 12.30 and 2:30

£3 per class; refreshments provided

Andy Butler – 07769 224793

Chestnut House, 209 Arabella Drive,

SW15 5LH

Ballroom/Latin American/Line Dancing

Every Wednesday // 2:00 – 3:30

Enquiries: (020) 8876 6794

Lennox Clubroom

42 - 59 Ludovick Walk, SW15 5LE

Roehampton Activity Centre

Every Wednesday // 11:00 – 2:30

Warm and cosy – have lots of fun socialising and mixing with others, plus outings

Vicarage Court, Alton Road (next to The Cornerstone)

Farmers' Market

Every Thursday // 1:00 – 2:00 lunchtime

Selling organically grown vegetables, bread, fresh eggs and more

The Hive Café, Digby Square (at the University)

Baby Rhyme Time

Every Wednesday // 10:30pm

Story Time

Every Friday // 10:30pm

both at Roehampton Library, Danebury Ave

Zumba Session

Every Monday evening // 8:00 – 9:00

First session free

020-8871-6373 or www.enablelc.org

Newlands Hall, 226 Stroud Crescent

60 Plus Café

Every Thursday // 11:00 – 2:00

Good food and company for all older Roehampton residents and carers

Methodist Church, Minstead Gardens

Footcare Service

Every Thursday at the 60 Plus Café //

10:30 - 2:30 pm

£10.00 per session

Book on (020) 8788 5577

Methodist Church, Minstead Gardens

Dance Classes for Women

Every Wednesday // 10:00 – 11:00

Urban dance to popular, empowering music

Babies' safe play area

£3 a session // Contact Kiri 07508036180

Eastwood Children's Centre, 166 Roehampton Lane, SW15 4HR

Bingo

Every Friday // 6:30 start: 7:30 eyes down, finish about 9:00

Cash prizes, raffle, refreshments – entry 50p, books £1.20 each

Alton Community Hall, 1 Petersfield Rise

Crafts and Knit & Natter

Wednesdays // 1:30pm – 4:00pm (music exercises at 1.15-1.30)

Bring your own needles and wool – info Rachel McCarthy 07904 152729

Minstead Gardens Seniors' Clubroom

Yoga class

Thursdays // 9.30 - 10.30am

First session free

020 3959 0033

Newlands Hall, 226 Stroud Crescent, Putney Vale, SW15

Roehampton Library, Danebury Avenue

Coding and STEM

A new activity in partnership with students from Ibstock Place School.

Every Friday // 3:30 - 4.15 pm

Roehampton Library, Danebury Avenue

English conversation classes

Every Monday // 5:30 - 6.30 pm

Roehampton Library, Danebury Avenue

Ti-Chi For Health

Every Tuesday // 11:00 - noon

£2.50 per session

Methodist Church, Minstead Gardens

CEDARS Youth Club

Every term-time Tuesday // 5.30 - 7pm

For children aged 7-11

£1 per child per session

Methodist Church, Minstead Gardens

+55 Stretch & Movement Class

Thursdays // 10.30am - 11.30am

For beginners, First session free (£3)

Emma 020 8871 8712

etoft@enablelc.org

Newlands Hall, 226 Stroud Crescent, Putney Vale, SW15

Monthly events

Councillor Surgeries

Second and fourth Saturday // 11:00 – 12:00

Roehampton Library, Danebury Avenue

Walking For Health

On Putney Heath and Wimbledon

Common. The first Sunday of every month.

Meet at 10.30am at the Shell petrol station,

Roehampton Lane. Group led by John

Horrocks. Finish at about noon.

Alton Regeneration Watch

We meet every third Wednesday of the month at the DARA Club, Focus Hall, Minstead Gardens, SW15 4ER. Start at 7:30 pm for a finish round about 9:30.

The 'regeneration' connects with so many other issues - please don't miss the chance to attend and raise your voice.

Roehampton Forum

Next meeting due in April: follow social media or check our website roehamptonvoice.online for updates.

Roehampton Partnership

Monday, 18th March at 7:00 pm, location t.b.a.

Contact Fiona Rae on (020) 8871 6010 or fiona.rae@richmondandwandsworth.gov.uk

and....

Digi-Pals computer support service for older people: see article inside. Sessions one day every month March to June.

At Roehampton Library, Danebury Ave