

---

---

# ROEHAMPTON VOICE

AN INDEPENDENT SOURCE OF NEWS, BY AND FOR ROEHAMPTON RESIDENTS

ISSUE 47 | SPRING 2022

---

---



Cover painting by Lynne Capocciama

# The Roehampton Response Network – A new chapter begins!

## A Jonathan Palma Tribute

We are saddened to see the departure of the chair of the network, JP.

JP is leaving his role at Citizens Advice Wandsworth, in which he has made a great impact. He started the role as project lead of the 'My Roehampton' project two years ago. During this time, amongst many other things he has:

- Helped Raise over £200k in funding for Roehampton's voluntary sector and communities.
- Mentored several local residents and helped them achieve their dreams.
- Created the RCWF, an easily accessible fund which has contributed to the creation and development of 15 grassroot organisations in Roehampton – So far...
- Won a Wandsworth Civic Award for his hard work and contribution to communities during the hardships caused by COVID-19 Pandemic.

- And created the Roehampton Response Network. Starting as a platform for forward planning, communication and co-ordination of response to and recovery from the Covid-19 pandemic and wider issues in Roehampton. There have been 58 meetings, over 150 unique attendees and 90 organisations represented. But most importantly the meetings have created relationships and support amongst the community.

JP has led the project and chaired the RRN and Steering committee meetings with great passion and dedication. We are grateful for his service and wish him and his family the best in their future endeavours.

*A network of over 60 different groups based in Roehampton exchanging and collaborating on issues that matter to local people from Universal Credit, Foodbanks, Support and activities for vulnerable children and families as well as collaborating and disseminating information about NHS services and devising fun activities for the future. If you are an individual interested in helping your community or part of group, charity or service designed to support the communities of Roehampton and would like to get involved contact 0203 559 2004*

– Tessa Shields, PCN Manager (interim), West Wandsworth PCN

*Jonathan Palma has worked tirelessly for our community in Roehampton and through his Roehampton Response Network I have forged valuable connections with other groups and individuals in the community, which has been instrumental in the building and maintaining of Little Village's presence in Roehampton. I have also made new friendships on a personal level. JP has energised our community and his never-failing smile and positive approach are an inspiration*

– Helen Speedy, Roehampton Satellite Co-ordinator and Volunteers Administrator, Little Village

*In his role as [Roehampton Community Capacity Building Project Lead](#), JP has always followed the principles of good community development. He has worked incredibly hard to understand what the community needs really are and where there is resource and energy for change. Where many projects default to imposing solutions on the community, JP has consistently followed an approach to empower local people and organisations, and to support them to speak and take a lead role in developing solutions to the challenges faced. Even when this has been a more complicated and longer process JP has stuck to his principles and found a community development path. As a result, our community is stronger, better supported and more resilient thanks to JP's work*

– Angus Robertson, Wandsworth Foodbank and Alton Action Volunteer

### ADVERTISING

We are still looking for someone to help with finding advertising for Roehampton Voice. We have expanded from 12 to 16 pages and it is important that we have more advertising income.

### CONTACT

Roehampton Voice is published by Roehampton Trust, a charity aiming at improving life in Roehampton. If you are interested and can help, please contact the Chair Tim Morris, either on 07990 570785 or on [info@roehamptontrust.org.uk](mailto:info@roehamptontrust.org.uk) or [roehamptonvoice@hotmail.com](mailto:roehamptonvoice@hotmail.com)

## ROEHAMPTON VOICE: ISSUE 47

### ADVERTISING

Advertising in the Roehampton Voice represents exceptional value for money. For the very reasonable rates below, you can reach 6,150 households throughout Roehampton.

### RATES

£20 for ¼ page  
£50 for ½ page  
£100 for ¾ page  
£200 for a full page

### EVENTS

Please pass us details of your events, for inclusion by **11 June 2022**.  
Distribution date of next issue: **22 June 2022**.

## SUBMITTING ARTICLES

The Roehampton Voice is keen to have input from as many local people as possible. If you would like to write an article for us, please email [roehamptonvoice@hotmail.com](mailto:roehamptonvoice@hotmail.com) by **11 June 2022**.

You can follow us on Facebook & Instagram **roehampton.voice**

JP invited me, to join the Community Week Meetings and the Roehampton Networking Meetings, as soon as I took up the post of Age Well Coordinator for Roehampton. In so doing, introduced me to the wider networks in Roehampton, which has resulted in my making some very helpful, productive, strong, connections for the benefit of Roehampton Residents. Benefitting not only from the networking support but also benefitting from guidance and advice and being included in events and discussions. I would like to thank JP for his commitment and endeavours to connect everyone for the benefit of our lovely residents in Roehampton

- Jenny Bailey, Age Well (Roehampton) Coordinator

Jonathan Palma - thank you for all the incredible support you have given to Roehampton,

Personally, you have supported me to realise my self-worth; you helped me to open my eyes and see that goals I have are not out of reach. Jonathan helped me realise my potential. He has been selfless and has gone out of his way to make changes in an otherwise unsupported community on the Alton Estate. Good luck for your future Jonathan - you're a legend!

- Lynne Capociamma, Community Champion, Estate Art Ltd



# Roehampton Community First Panel – Roehampton Trust FUNDING AVAILABLE

Application forms from: [communityfirst@roehamptontrust.org.uk](mailto:communityfirst@roehamptontrust.org.uk) or 020 8785 4690 or Roehampton Trust, 80 Coombe Rd, New Malden, Surrey KT3 4QS

## ROEHAMPTON LOCAL PRIORITIES – PROJECTS FOR:

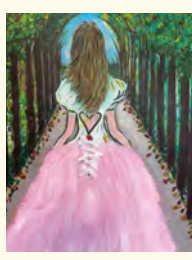
- Improvement of the visible environment eg public gardening, better spaces
- Increase the range of leisure and health well-being activities eg sports, home skills, games, walking
- Develop communications, connections and participation eg. newsletter, contact networks, signage, transport
- Events to raise community spirit and cohesion across all age groups eg Roehampton Festival, luncheon clubs
- Activities to increase employment and volunteering eg bicycle repair unit, business units

## FUNDING AVAILABLE & TIMETABLE:

- Project maximum £1,000
- Applications in by Wednesday 11 May 2022
- Presentations evening Wednesday 18 May 2022
- Decisions by Wednesday 25 May 2022 [wandsworth.gov.uk](http://wandsworth.gov.uk)



### RV47 COVER IMAGE: 'PATH TO FREEDOM'



This image by Lynne Capocciamma (founder and inspiration behind Estate Art), "represents a woman realising her self-worth, walking away from her troubles into freedom". The painting was first exhibited in support of White Ribbon UK, as part of a series of exhibitions organised by Estate Art in Roehampton.

The image is a powerful emblem for Spring, bringing with it new hope and new life. Spring is the time of new beginnings; rebirth, renewal and spiritual rejuvenation.

# The Roehampton Garden Society Centenary

by CHRISTINE WOLSKI

2022 is a year of several centenaries. In 1922 the BBC was founded, Tutankhamen's tomb was discovered - to name just two - and the Roehampton Garden Society (RGS) began on the nearby Dover House Estate, originally called the Roehampton Estate, built between 1920 and 1927 in the grounds of Dover House.

The estate's garden society has its roots in Roehampton, where the Roehampton Horticultural and Cottage Garden Society existed before 1922. Minutes of their meetings, held by Wandsworth Heritage Service, date from 1893, although it began in 1873.

The society held an Annual Show in the summer in the grounds of one of the great houses that overlooked Putney Heath. This was like a village fete, with not only a flower and produce show, but athletic sports, an industrial exhibition and dancing "commencing at 7pm."

Roehampton Village was made up of cottages around the High Street, inhabited mostly by gardeners who worked in the grounds of the great houses in the area. The Summer Show would have been a

fun day out for the village families and it's interesting to see the minutes record "visitors should be encouraged to look at the exhibits." Lady Saunders donated a silver teapot as a prize for the best kept cottage garden; intriguingly she withdrew it two years later.

We know it must have been a fun day out for all as "18 gallons of ale, 6 dozen minerals, ham cheese and bread be supplied for judges, committee and band."

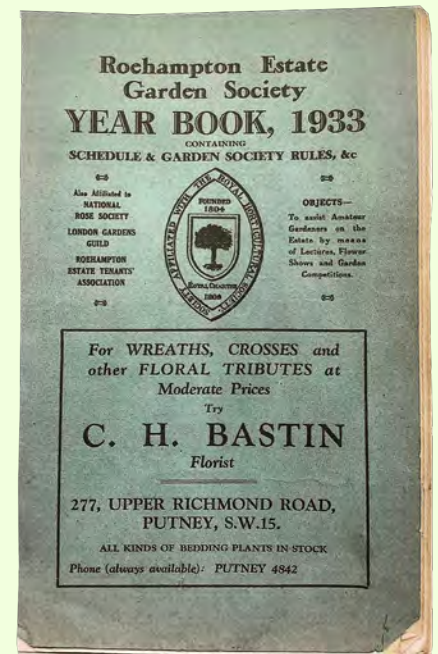
The shows were suspended during the First World War (1914-18) and re-started on a smaller scale in the late 1920's.

The Dover House Estate was begun in 1920 and designed on Garden City principles - gardens for residents, green spaces and 3 areas for allotments, as part of the "Homes for Heroes" initiative to house returning service men after the First World War. Food shortages during that war led to a drive to "grow your own." In 1922 the Roehampton Estate Garden Society was formed with the aim of "beautifying" the newly built estate and held its first show that year.

In 1955 the older horticultural society merged with the Estate Garden Society, becoming the Roehampton Garden Society. In the 1970's one of the allotment sites was lost to housing development, but the remaining two survive, managed by the Roehampton Garden Society.



Roehampton Garden Society  
- historical images



Today the society is a thriving community with 400 members and 250 plots. A huge variety of vegetables, fruit and flowers are grown. Nowadays there is both a summer and an autumn horticultural show. Some of the cups still presented were donated by the older horticultural society.

Visit our centenary exhibition in Putney Library during Wandsworth's Heritage Festival (28th May-12th June).

If you have any photos or memories of the allotments you can share, or contributions to our research, we would love to hear from you. Please contact us at [RGS.sw15@gmail.com](mailto:RGS.sw15@gmail.com)



Roehampton Allotments by Andrew Wilson



Roehampton Allotments by Sarah Purcell

# Artwork by Heathmere Primary School

by LAURA HEPWORTH

The children of 3L and 3T at Heathmere Primary School have been exploring the world of Plants and Flowers this Spring through their Art focus, Botanical Art with Art Specialists Miss Hepworth and Miss Orode. Taking inspiration from Kew Gardens artist in residence and botanical artist, Lucy Smith. The children have experimented with a wide range of processes including, collage and still life, to develop a fabulous range of artistic outcomes that celebrate the marriage between art and science and the beauty of the natural world.



# Celebrating a year of Little Village

by HELEN SPEEDY

This month, Little Village in Roehampton celebrates its first year of being fully operational, supporting families in Roehampton face to face from our satellite at the Eastwood Children's Centre.

Little Village is like a foodbank, but for clothes, toys and equipment for babies and children up to the age of 5. Our mission is to build small, warm communities of families who support one another with dignity and love, when times are tough.

Having a satellite service in Roehampton has enabled families to access support locally and we have been welcoming up to five families a week, at the Children's Centre, since April 2021. With the pandemic hopefully easing, we have plans to increase our capacity.

In addition to our weekly volunteer and family sessions, we've run a fully booked donation session and in November we ran a Toy & Book Swap Shop for local families, as part of the Together on Climate Change Festival.

As a volunteer driven organisation, we have created volunteering opportunities for local residents to build skills and confidence. We would like to thank our amazing local volunteers, who have worked so hard to establish and run this new satellite - we couldn't do it without you!

I would also like to thank our referral partners in and around Roehampton, who have been working tirelessly with families throughout the pandemic, and to all the families who have supported us with donations of beautiful pre-loved clothes, toys, prams, and other essential items.

If you live in Roehampton and are interested in joining our friendly team, please visit our website

and click on 'Get Involved' then 'Volunteer with us'.

If you or a family you know would benefit from free kit, clothing, and nappies for your children under five, please ask a professional to fill out the form on our website by clicking on 'Make a Referral' and then 'Refer a family'. Alternatively, drop by to see us in the main hall at Eastwood Children's Centre on a Tuesday between 10am and 1pm and we can talk you through the process.



## Hersham Close Residents Association

by **STEVE FANNON**

The Hersham Close Residents' Association consists of three maisonette blocks which are located in front of Whitelands College. The HCRA has been in existence for seven years and in this time has, with the assistance of the Council, implemented many physical improvements to the area.

In all, across almost 20 projects through the Council's Small Improvement Budget the RA have spent close to £50,000 on such improvements.

The most recent was the path improvement opposite Shawford Court 1-10 and nearby the Shawford Court bus stop. The before and after photos highlight the amazing work of the HCRA and the Council with regards to the ongoing efforts for the area. This work alone was £14,750.00.

Any other ideas for improving the area please let us know at – [hersham.close@yahoo.co.uk](mailto:hersham.close@yahoo.co.uk)



*Before the path improvement*



*After the path improvement*

## Alton Estate Regeneration

by **MARITZ VANDENBERG**

As one who has lived in the Alton Estate since 1997, I welcome most warmly the opening of McKinney House on Bessborough Road to mark the launch of Wandsworth Council's regeneration scheme. As visitors on 5 and 6 November last year will confirm, the new building offers a quality of accommodation that will come as a revelation to inmates of the Alton's existing maisonettes. Replacement of these mediocre units, resorted to by the LCC after its budget for the estate had been exhausted on the exemplary but very expensive tower blocks, is long overdue. Naming the new building in honour of the Rev Jim McKinney is particularly apt, as he was so committed to the regeneration scheme that he had his term as local Vicar extended in order to see the programme realised. The Council now owes it to him, and to the local community, to see the programme carried through with maximum speed.

## Music to Our Ears!

by **SIMONE FARR**



The Roehampton Voice has acted as the perfect matchmaker uniting the "An A-Choir-ed Taste" choir with local musician Pascal Blaschta.

The choir reached out for an accompanist to support their singing rehearsals and after Pascal spotted their request in the Voice they are now collaborating in splendid harmony.

The choir, facilitated by WBC Community Development Team, is open to anyone over 60. They meet at St. Joseph's Church and sing a range of 60s/70's and traditional music. No previous experience is necessary.

For more information contact:

[Simone.farr@RichmondandWandsworth.gov.uk](mailto:Simone.farr@RichmondandWandsworth.gov.uk)

or Elaine Curley on 07956 248 057

**In 2022, Her Majesty The Queen will be the first British Monarch to celebrate a Platinum Jubilee. Seventy years of service, having acceded to the throne on February 1952 when she was 25 years old. There will be celebrations throughout the United Kingdom, the Commonwealth and around the world.**



We will be celebrating here in Roehampton and the 60 Plus Café is arranging 2 free events for older people to celebrate the Platinum Jubilee.

### **Wednesday 1st June**

Jubilee Concert presented by the Variety Collective hosted by Ibstock Place School and Theatre | 2.00 pm – 4.00 pm

### **Wednesday 15th June**

Jubilee Tea Party hosted by the Kairos Centre | 2.00 pm – 4.00 pm

Transport can be arranged and the venue is fully accessible

All events are by Ticket Only | To book tickets please contact

**Pam 0208 788 5577**

## A fond farewell from Councillor Gilbert

I would like to thank the residents of Roehampton for everything we have done together since I was elected to represent you in May 2018. I am not standing again for election, but I will miss the role of Roehampton Councillor very much!

Highlights for me have all been about people. The pandemic brought us closer together, for example, with Regenerate RISE and the Roehampton Community Box I saw people almost every day when delivering food, and it was a privilege to be part of the local pandemic response. RISE and the Community Box have been literal life savers during these most difficult times, and we are fortunate to have these organisations in Roehampton.

One of my biggest aims as a Councillor was to do more for survivors of domestic abuse in Roehampton. So many of the people I have met, mainly women, have suffered domestic abuse, and a huge range of consequences, for example moving home & schools very quickly, losing jobs and support networks, and all the costs which also arise.

I therefore worked with a friend who is an expert family lawyer to set up a new free legal advice service with her law firm and Citizens Advice Wandsworth (CAW). I also worked with the WONDERFUL Vicky Pigott to set up the Roehampton Women's Network, to inform the community about where people can get support. My longer term aim has been to expand Battersea's One Stop Shop service for domestic abuse survivors into Roehampton.

I am thrilled that this will start in April 2022, again hosted by CAW, providing specialist domestic abuse, housing, police and family law advice, all in one place. I am very grateful to the Council and CAW for all their work on making this happen.

You can't have an article about Councillor work without mentioning bins! My daughters and I have lifted many bags full of litter "to save the hedgehogs" as my youngest would say, helped by residents including Reverend Rey and The Alton School. We all know that there are many issues including not enough bins, missed collections, and not enough support for recycling.



So I was pleased that constant lobbying brought new bin enclosures on Harbridge Avenue, giving back recycling bins at Binley and Winchfield Houses, and a review by the Council of the current cleaning contract. I am grateful to the residents and Residents' Associations (RA) for help with this – I hope to see more RAs forming, to have more of a voice with the Council on these issues!

Another highlight was helping residents who asked me to put their views to the Property Tribunal after the Council's decision to take them to Court over sprinklers. I persuaded the Tribunal to come to Wandsworth Town Hall and listen to residents directly. The Tribunal decided that the Council had been wrong in its approach. I know that their tactics caused a lot of anxiety for many people.

Other things I've helped with have included a Windrush case, and it was an honour to attend that resident's citizenship ceremony!

I will always feel frustrated for those who I haven't managed to help, particularly the many families who need secure, better housing.

Most of all, I have learned a lot and made many friends in Roehampton, and I hope we will always stay in touch – [clairegilbert77@gmail.com](mailto:clairegilbert77@gmail.com).

# Local Council Elections

## Candidate Profiles: Roehampton Council Election May 2022

### RAY CHAPMAN – CONSERVATIVE PARTY CANDIDATE



Ray Chapman, 50, is not what some might consider a typical Conservative politician. Yes, he wears a crisp white shirt and tie, but his origins are a long way from the Bullingdon Club.

He grew up in East London on a council estate with his single mum, attending a comprehensive school, and leaving to join the Margaret Thatcher-era Youth Training Scheme, where young people from impoverished backgrounds took on apprenticeships in industry.

Chapman has worked in many roles; transport, tourism, business development, and technology. Now he drives the Number 28 bus from Wandsworth to Kensal Rise, meeting people on his route and helping vulnerable people out; “it’s really interesting to connect to the community” (and) “getting people home safely” - especially when driving the N28 overnight.

Chapman feels an affinity to the tower blocks of the Alton Estate - they are very much like the estate where he grew up. In a historical connection, he notes that when his forebears were bombed out of their homes in the East End during World War II, some families, including his, moved further east into new estates, and some moved west to the brand-new Alton Estate on the edge of Richmond Park. “I connect with Roehampton,” he says.

Chapman, who lives in Southfields, is standing for the first time for public office but has been diving headfirst into community projects for many years. After he moved to Wandsworth in 2016, he has supported Wandsworth council in a variety of projects.

Before that, he lived in Hastings for 10 years where he volunteered on a major project to redevelop the storm and fire-damaged Hastings Pier. He’s clearly proud of the £14 million project that he helped see through, which brought a new community amenity to the town.

Similarly, he believes the Alton Regeneration presents a great opportunity for Roehampton residents to have their say in their community redevelopment.

### JANE COOPER – CONSERVATIVE PARTY CANDIDATE



It’s often been said that all politics is local, and Councillor Jane Cooper understands this very well. She has 20 years’ experience as a councillor, served three terms as Mayor of the borough and two as Deputy Mayor.

Over the years, she has sought to solve problems raised by local people; installing a zebra crossing on Putney Heath to benefit elderly residents, reducing the speed limit to 20 mph on roads in West Putney, working with Transport for London to ease traffic flow on Roehampton Lane following the Robin Hood gate closure, to cite but a few.

A native of Yorkshire, Cooper has lived in Putney for 45 years, working in the Civil Service as head of hospitality for a large government department and serving as a magistrate for 27 years.

Cooper lives in Southfields and has represented the West Putney ward since 2002, but now is standing for the Conservatives as 20 percent of her ward is moving to Roehampton in the recent redrawing of ward boundaries. Cooper almost didn’t stand at all and was planning to retire from politics. “By public acclaim, they asked me to stay on,” she laughs.

Although she doesn’t live in Roehampton, she knows the area well having being Mayor for so long. The most important issue for Roehampton is getting the delayed Alton Regeneration off the ground, which she says should begin in earnest in about 18 months.

Asked about the potential to disrupt established communities on the estate, she replies:

“We don’t move anyone out. We have a total guarantee of nobody gets moved out of Roehampton unless they want to move out of Roehampton”.

The regeneration plans call for several hundred new-build private homes to be included, which has raised concerns about gentrification among critics. Cooper responds that including private homes is the only way for such large-scale projects to be completed -

“You have to build private to pay for the redevelopment”.

### DEEN OSSMAN – CONSERVATIVE PARTY CANDIDATE



Deen Ossman, a Muslim and immigrant from Sri Lanka, believes he can ‘build a strong bridge’ with people in Roehampton who come from a migrant background; particularly those who may need help from the council with various problems in their lives.

Ossman, 50, came to live in the UK as teenager to study for A-levels. Sponsored by his barrister father, he had hoped to continue to university, sadly, when Ossman was aged 19, his father died, resulting in a change of direction.

Initially cleaning toilets on the graveyard shift at McDonalds, before moving onto the slightly more glamorous job of waiting tables at big events for a catering hire company, Ossman eventually set up a small technology business. He partnered with a bigger firm, writing software which was used by the National Health Service to enable GP practices to become more independent. Following a move into e-commerce, Ossman developed software programming which helped the London Olympics and Formula 1 run their events.

“I’ve been a serial entrepreneur,” he says, “I took a break a couple of years ago and now provides holiday packages for tourists to Sri Lanka and the Maldives”

This has given him time to pursue political ambitions. Briefly a Labour Party member, Ossman approached the Conservatives about a year ago.

“I always wanted to go into public service. I want to help. I’ve lived the Wandsworth borough for about 30 years, first Tooting, then Roehampton, and now I live in East Putney with my family”

Ossman is keen to invite local people from different ethnic groups to set up pop up food stalls to create a more vibrant atmosphere to the town centre. “You’d need to do something innovative to get that going - this is where the council can get involved - to support local people in business. Everyone would benefit!”



**The Wandsworth Council elections will take place on Thursday 5 May.** The Putney Society, the amenity society for Putney and Roehampton, has organised a hustings meeting, for Roehampton and also West Putney Wards, where you will get the opportunity to meet and question our local candidates. It will be at Holy Trinity, Roehampton Parish Church, Ponsonby Road, off Roehampton Lane, on **Wednesday 13th April at 7.30pm**. This time around, Labour Councillors Jeremy Ambache (who is standing in West Putney), Claire Gilbert and Sue McKinney will not be standing for re-election in Roehampton.

**Marianne Atterbury met with the candidates hoping to be elected, to find out more about the people behind the politics.**

## Candidate Profiles: Roehampton Council Election May 2022

### GRAEME HENDERSON – LABOUR PARTY CANDIDATE



Graeme Henderson is most concerned that the Alton Regeneration plan meets the needs of Roehampton residents. He makes a comparison to the nearly-complete Nine Elms area in Battersea, where luxury riverside apartment blocks dominate. These flats are well out of the price range of local residents. Instead of the Thames, Roehampton has Richmond Park as an attraction for developers and homeowners, and Henderson worries that local residents will be priced out.

The current regeneration plans include new homes that will cost £500,000 to £600,000, he says. "They are not dealing with local housing needs".

Henderson was first elected as councillor for Earlsfield in 2018 but is standing for the Roehampton Ward in response to the redrawing of ward election boundaries. He lives in Tooting, in what will become the new Wandsworth Town ward.

He has lived in the borough for 25 years, is a community activist and a former Trade Union president. He also sits on the Adult Care and Health Overview committee in the council.

He agrees with fellow Labour council candidates that much of the existing housing on the Roehampton estates are in poor condition; "we need to put more money and effort into our housing stock. This council has the money to spend on repairs, but it chooses not to. The council has in excess of £100 million in its Housing Revenue Account, which is used, amongst other things, to fund repairs to council-owned property"

Among other priorities is finding ways to reduce health inequality among residents of Roehampton; "in the most affluent wards in Wandsworth, people can expect to live 5 to 10 years longer than those in the poorer wards." He would like to try to address the root causes of health inequality, such as access to services and engagement with people in the community.

### MATTHEW TILLER – LABOUR PARTY CANDIDATE



"Being from Roehampton, I want to represent local people," says Matthew Tiller, a lifelong resident of the Alton Estate. His grandfather, Terence Tiller, was a poet and BBC radio producer, who created the first radio adaptation of Lord of the Rings in 1955. Tiller's grandfather lived in Binley House, a Grade II listed slab block on Highcliffe Drive.

Matthew Tiller works as a Maths teacher at a Further Education College and is also a technology trainer with blind and partially sighted people. Having disabilities himself, including hearing impairment, he cares deeply about helping disabled people with their quality of life and living conditions. Noting that a lot of a councillor's time is spent helping individuals with casework, Tiller says he would make it a priority to help people with disabilities get homes that match their needs.

Matthew Tiller has personal experience of dealing with the council about problems with housing and "how much they drag their feet on repairs." Tiller, 43, has spent the best part of 2019 trying to get contractors hired by the council to rectify a mistake they had made in his flat. "Someone who has less persistence than me would still be living with the flood damage". If elected as local councillor, Tiller would work to ensure that fewer mistakes were made by contractors and that any issues were resolved promptly.

"As a councillor I would keep accessibility in mind in planning developments, such as problems with potholes and uneven pavements - it's pretty bad for people with disabilities and for the elderly".

Transport is another key issue in Roehampton; "we need more frequent buses and better transport links. There are problems with overcrowding on buses at rush hour where residents often can't board a bus because it's full".

Tiller, a former editor of Roehampton Voice, sits on the Western Area Housing Panel and a local residents' association. Tiller is standing for a council seat for the first time.

### JENNY YATES – LABOUR PARTY CANDIDATE



"I have a great concern for social justice," says Jenny Yates, a lifelong Labour Party member.

Asked why she's standing as a councillor for the first time, she says she spent much of her career working in international development overseas "and now I want to see a fairer, more just society locally."

Yates has previously worked for Oxfam, The Department for International Development (DFID) and an organisation founded by Nelson Mandela, the Elders. She now chairs a homelessness charity, Groundswell, and serves as a governor at Alton Primary School. Yates is passionate about reducing poverty, tackling climate change and plans to be a voice for better housing and more affordable homes in Roehampton.

While she lives in Tooting, Yates plans to visit Roehampton every week if elected, attending community meetings, holding surgeries with local councillors and knocking on doors to find out about local concerns.

Like the other Labour candidates, Yates insists that the Alton Regeneration must meet the needs of local residents, and existing buildings must not be neglected as they have been.

Yates grew up in Merseyside, has lived in Wandsworth for 11 years. She was encouraged to run for the council seat by Fleur Anderson, Labour MP.

A key issue for residents, she notes, is rubbish collection, particularly recycling. Yates reports that local residents have long complained about the irregular recycling collection, so much so that bins overflow and rubbish blows around.

"Wandsworth has a pilot scheme in Southfields to collect food waste – this scheme should be brought borough wide. If neighbouring boroughs have better recycling rates, there's no reason for Wandsworth not to improve theirs."

She would also like to have more "mega-skip" days where local residents can occasionally get rid of large bulky items at no cost in their own neighbourhoods. "A visit to the tip with large items requires a car, which many people on the estate don't have access to".

**BEN SPEEDY –  
LIBERAL DEMOCRATS  
CANDIDATE**



Ben Speedy need only step out the door of his Roehampton home to find a good reason to stand as a local candidate for the Liberal Democrats. He cites the poor air quality caused by congestion on the nearby A3 and Roehampton Lane and worries for his family and his neighbours.

“The key thing with this neighbourhood is making sure we are well connected and that the routes are sufficiently well populated with buses – there is a lack of joined-up thinking on transport, even with some well-intentioned plans, for example, the recent attempts to close rat-runs through local streets in Putney were a good idea, but their effect was to create a pollution-inducing standstill on major roads at times”.

Asked about regeneration of the Alton Estate, where he lives with his wife and two children, Speedy worries that buildings will be prioritised over community.

“Socially, (the estate) is a very quiet, orderly place. There’s great social cohesion to it. The priority is to nurture what’s good about it. Regeneration naturally will displace a lot of people. It’s the uprooting that might occur – that’s the worry”

There is also a need to develop facilities for young people in Roehampton, and better maintain those that still exist., which have been “left to moulder away” noting that “there is a tendency to put in capital spending and then not maintain it.”

Speedy works full-time as a software engineer and is a part-time artist, regularly exhibiting and collaborating with Estate Art, for whom he recently completed a mural at the Whitley Point games area. His artwork has graced the cover of Roehampton Voice (Winter 2020) and features in the magazine distributed by St Margaret’s Church, Putney, where he is a church warden.

Speedy previously stood for election as a councillor in 2018; “it’s important for candidates from all parties to stand in local election in order to give voters the full range of choices on who they want to represent them.”

## What is the most important issue in the election for Roehampton?

### Ray Chapman, Conservative

We want to deliver better homes, public spaces and youth centres through the Alton Regeneration plan. Everyone is now on board to get that delivered. We have to ensure that we engage with stakeholders over the development; if people want a boxing club, we’ll get a boxing club. If they want a choir, we’ll have a choir. On transport, we are investigating trialling an express bus service in Roehampton. We should find out where people are going, when they are going and what needs to be done to get them where they need to be.

### Jane Cooper, Conservative

The delayed Alton Regeneration plan will transform people’s lives. The newly built McKinney House on Bessborough Road, with 10 new council flats, is an example of how the project will transform a large part of the Alton Estate. In these, you’ve got a large kitchen and sitting room, room for a table for six. Some have three double bedrooms and therefore perfect for families.

### Deen Ossman, Conservative

Working closely with the minority community in Roehampton; as a Muslim and an immigrant from Sri Lanka, I feel I would be a strong bridge. I would also like to work with young people in Roehampton to get involved in sports. It helps them in whatever career they choose. It helps you deal with failure. You learn from failure and go forward to the next week. I would use my experience as a businessperson to provide innovative solutions for the community, such as in the transport network to better connect Roehampton to underground and rail stations.



### Graeme Henderson, Labour

Clearly it must be Roehampton regeneration. We need to ensure the redevelopment meets the needs of Roehampton residents, prioritising housing for local people, not for those who live outside the borough and can afford the new private homes outlined in the plans. It’s quite clear residents want more social housing, more community facilities, and better transport.

### Matthew Tiller, Labour

Repairs and refurbishment of council properties must be a priority. We need more frequent buses and better transport links; buses are overcrowded at rush hour. I’m working with the Roehampton Partnership investigating solutions to transport issues, including introducing a ‘Hopper bus’, which residents could call and schedule rides.

### Jenny Yates, Labour

Many buildings on the Alton Estate will be left untouched by the Alton regeneration project. The Alton and Lennox Estates have been so neglected by the council that the state of some of the properties is awful. There are leaks, black mould, insect infestations. If Labour were to win control of the council, we would listen better, deliver better and provide more timely repairs. There is a poor rate of recycling of rubbish—about 24 percent—in Wandsworth, compared to other London boroughs. If neighbouring boroughs have better recycling rates, there’s no reason for Wandsworth not to improve theirs.

### Ben Speedy, Liberal-Democrats

The Liberal-Democrats green agenda is critically important. I live a stone’s throw from Roehampton Lane and the A3. The air quality is record-breakingly poor. The council needs to work on improving air quality by improving local bus routes and reducing traffic congestion. He would like to see fully-electric buses on local routes, not just hybrid ones.

**Editors note:** At the time of writing we were unable to interview Henry Compson who is also standing as a Liberal Democrats candidate

# Petition for the People's Plan for the Alton Estate



In the last edition of the Roehampton Voice, we outlined the long-running failure of Wandsworth Council's plans to make significant improvements for the Alton Estate, and the resulting decline in living conditions in centre of the estate.

We also described how the People's Plan for the Alton Estate was developed in 2020-21 through a community-led approach, co-designed with estate residents and local stakeholders, and supported by planning experts at University College London. We have now launched a petition to support the People's Plan.

In contrast to the Council's plan for mass demolition and building of predominantly expensive private flats for sale, the People's

Plan is based on what existing local residents want and need, with social and environmental sustainability at its heart.

Our survey (UCL/Alton Action 2021) showed that residents do want a regeneration of the area and that their priorities are:

- Modernisation of homes affected by leaks, damp, mould, lack of ventilation and poor heating/insulation
- Refurbishment of facades and entrances
- Protection and better use of green spaces
- Building of more Council homes, especially family-sizes ones
- Making buildings more secure and fire-safe

So, the People's Plan was created around these priorities. It is fully costed and financially viable. You can see full details of the Plan here: [www.altonaction.org/resources](http://www.altonaction.org/resources)

We believe that the People's Plan is:

- BETTER for building new Council housing
- BETTER for the environment
- BETTER for Local People – less disruption, more community facilities, shops, workspace and parking
- BETTER in preserving the heritage and nature of the estate
- BETTER financially; a viable project and less expensive

And local residents largely agree. So far, over 120 local people have signed our petition:

If you also prefer the People's Plan, you can sign the petition online here: <https://www.altonaction.org/petition>

If you have any questions or comments, please contact the Alton Action Team on [altonaction2020@gmail.com](mailto:altonaction2020@gmail.com)

**“We call on Wandsworth Council to adopt the proposals within the People's Plan and use them as the basis for a revised plan to improve the Alton Estate”**

## Let's get walking! Roehampton Walking Groups



Age Well Roehampton meet on the first Tuesday of the month outside the Roehampton Library at 1pm – all over 55's are welcome to join in an “easy-asy” steady walk, to several venues in and around the area which vary each month and always end with a cup of tea at the end!

Apart from the exercise we very much enjoy meeting others, chatting along the way, taking photos and we very much welcome furry friends to accompany us – although this little puppy was too young to walk so we took turns in carrying him!

I am Jenny, and My phone number is 07826 779 684 give me a call to find out more about walks and other activities.

Moving on to more experienced Walking Groups with John Horrocks...

On the first Sunday of every month, for five years now, Kathy Chandler and John Horrocks, have been leading a walk of local residents over Putney Heath and Wimbledon Common, and, sometimes



Roehampton Ironmongers Blackford's Path by Dez Mendoza

Richmond Park. Only once has the walk been defeated by heavy rain. Everyone is welcome to join the walk. We meet at the Shell petrol station on Roehampton Lane at 11.0am. Come and join us! The Commons should be looking lovely, now that Spring has arrived!

# COFFEE MORNINGS FOR WOMEN IN PARTNERSHIP WITH THE WEST WANDSWORTH PCN



The West Wandsworth Primary Care Network is pleased to sponsor the Roehampton Women's Network project of hosting regular term time Coffee Mornings for women.

Through the feedback from the Roehampton Response Network, local residents and now the Roehampton Women's Network there is clearly an appetite within Roehampton to create a safe conducive space where local women can come together on a regular basis, develop their networks, build resilience and confidence and improve their relationships with local services.

The key to these proposed coffee mornings will be simplicity and authenticity. In the beginning it's about offering respite and a friendly memorable interaction (no agendas). Led by locally trained and trusted people with a view to develop other local women with opportunities of training and paid work.

The RWN is made up from local charities such as Little Village, Food Boxes, and other community groups; services such as Ahmadiyya Community, Early Help Assessment children services, Talk Wandsworth, plus Residents in Roehampton and the Ashburton area. Local Councillors, Teachers, Roehampton University, CAW and Council community coordinators also play a major part. Chaired by Vicky Pigott, the RWN meet monthly via Zoom with the support of Cllr Claire Gilbert.

*For further information contact: Verena Nash - [verenanash@hotmail.com](mailto:verenanash@hotmail.com)*

The West Wandsworth PCN consist of 4 practices:  
Danebury Avenue Surgery | Putneymead Group Medical Practice  
The Alton Practice | The Roehampton Surgery



*Dr Zoe Rose –  
Joint West Wandsworth PCN  
Clinical Director*



*Dr Farwa Hasan - Joint West  
Wandsworth PCN Clinical Director with  
local MP for Putney, Southfields and  
Roehampton, Fleur Anderson*

# Creating Connections – Neuromuscular Re-education Centre

An innovative approach arrives to Roehampton High Street!

My business partner and I (a Roehampton resident for close to 5 years) are proud to open the first Centre working with the Anat Baniel Method® NeuroMovement® (ABNM®) in our neighbourhood (and in fact in the UK) which we hope will have a life changing impact on many of our customers as well as being a positive influence on our community as a whole. Having less empty units on the High Street can only be a good thing!

The work is suited to a wide range of people; from children with special needs, to adults with physical or brain injuries or people seeking to perform better as professionals (athletes, musicians, dancers, etc.). ABNM® has proven to deliver amazing results thanks to its personalised approach leveraging people’s amazing capability to learn by creating new neural connections.

ABNM® is highly sought after in the US as it’s an effective approach focused on improving the brains ability to learn, adapt and develop itself, thereby empowering the rest of the body to improve its capabilities. Its different to any other therapy on offer in the UK because its main emphasis is on empowering the brain to become better at learning. We have a great team and have partnered with some London practitioners as well as bringing over, on a monthly basis, some of their most highly experienced colleagues from the US and Europe.

If you have questions, please pop by the Centre at 18 Roehampton High Street at any time, and we’ll be happy to answer them and provide more context about our work.

For further information, please visit [www.creatingconnections.ltd](http://www.creatingconnections.ltd) [www.anatbanielmethod.com](http://www.anatbanielmethod.com)

**DK Nails Spa**  
PROFESSIONAL NAIL CARE FOR LADIES & GENTLEMEN

- Spa Pedicure With Hot Stone Massage
  - Manicure
- Shellac Pedicure And Manicure
  - Nails Extension
  - SNS Dipping Powder
  - Nails Art

Great price Great service!

**Open:**  
Monday - Saturday: 10AM - 7PM  
Sunday : 11AM - 5PM

*Walk - in's welcome*

📍 28 Roehampton high street, SW15 4HJ  
☎ 020 3325 9924

**What Lies Within a University Campus**  
Wednesday 13th April 2022,  
2pm - meet in the reception of Whitelands College

Contact Jenny Bailey for more information on 07826779684

The University of Roehampton spreads over 58 acres of Roehampton, its four constituent Colleges each have their own unique history dating back 180 years, but it is the campus itself that has the most intriguing history.

Starting in 1624, this talk will explore the Jacobean mansions, Georgian villas and Victorian scandals - not to mention the Second World War bombing that saw the near destruction of part of the campus.

**Getting Ready For Nursery School**

Do you have a child starting Nursery in September?

Wandsworth Children's Centres are running a programme especially for children who haven't been to nursery before

Children will have opportunities to play with quality resources, make friends, share a healthy snack, develop their independence, and get used to a simple routine alongside their parent/carer.

Including visits from a Speech & Language therapist & an Educational Psychologist

Starting from week beginning 19<sup>th</sup> April for 12 weeks

As parents, you are your child's first and most important educator. Playing, reading, and talking to your child will greatly increase your child's language skills and how well they do at school

Webinars on how you can help support your child to be ready, with a focus on their communication and language, routine, toilet training, boundaries and behaviour

Look out for more details on <https://www.facebook.com/RoehamptonChildrensCentres> and the Family Information Service Children's Centre page

# COVID-19 in Roehampton: Spring 2022 update

by **ROBERT BUSCH**

Roehampton has seen much suffering since COVID-19 first spread in the UK ever since the first lockdown in Spring 2020. Many residents have survived one or more bouts of more or less severe infection. Others were unable to work during lockdown, were required to self-isolate on low rates of sick pay or were even unable to shop for food. Loneliness was awful for many people. COVID-19 also made it more difficult to deliver other healthcare, affecting those with chronic illnesses.

Roehampton has also seen inspiring initiatives to help people through the worst. The Roehampton Response Network has arranged food drops, informational events and other help. Volunteer initiatives, such as Lynne Capocciama's projects, have brightened our lives with singalongs and art exhibitions.

Last year, safe, effective vaccines were distributed by the NHS, after a rapid but thorough approval process. Among the elderly and other vulnerable groups, vaccine uptake has been high. This greatly reduced the proportion of infected patients needing hospital care or dying. Treatments for severe illness have also improved.

Even so, it is best to remain cautious. Since December, Omicron has replaced earlier strains of the coronavirus. It spreads more easily and can infect people who have had vaccines or recovered from a previous the infection. On 8th March, the ZOE COVID study estimated that, in the Wandsworth area, 1 in 25 people were infected. Nationwide, cases remain near their all-time high; much of London is once more a zone of active viral spread. Current data are at <https://covid.joinzoe.com/data#interactive-map>.

Vaccine uptake remains low in Roehampton: according to local NHS organisations, fewer than 6 out of 10 residents have received two doses of the vaccine, and fewer still have

had boosters. The vaccines will not stop you from getting Omicron, but they protect very well from severe disease (needing hospital care) and death. Fewer people now die directly of the disease, but in unvaccinated people Omicron is thought to be about as dangerous as the original COVID-19 strain from Spring 2020. "Long COVID" afflicts some of those who survive the acute infection. And we don't know when the next variant may arrive or how bad it will be.



The government is ending most public health measures to contain viral spread. From April, it plans to end free testing, mask mandates, and financial support for people staying home because of COVID. Even so, you can greatly reduce the risk to yourself and loved ones and the burden of COVID in the community. Keep a safe distance from those you meet. Shop when shops are less crowded. Socialise outdoors or open windows to blow any virus away. If you are not yet vaccinated or have held off on your booster, talk to your GP or to someone at the Queen Mary's Hospital vaccination hub about any concerns, and get the protection if you feel comfortable to proceed.

Other precautions may become more costly from April but do what you can. Wear a good-quality mask (FFP2 or FFP3 are best) in indoor crowds and on public transport. Ensure a good seal around nose and mouth. When meeting in groups, get lateral flow tests. COVID-19 can produce symptoms similar to other flu-like illnesses, as well as

the "classical" symptoms of high temperature, new continuous cough, or the loss of sense of smell or taste. If you have symptoms or a positive test, stay at home until you feel better and test negative.

Any reduction in COVID-19 burden relieves pressures on the NHS. When fewer people spread the virus, people with suppressed immune systems or chronic conditions visit their GP or consultants more safely in person; doctors, nurses and other practice staff will be forced to self-isolate less often. Patients and staff all want more healthcare to happen in person, rather than over the phone. They wish to ensure that more patients can see the same doctor repeatedly for continuity of care, and access mental health and diagnostic services. Local NHS organisations are investing to make more of this happen. Hopefully, Roehampton will soon have a dedicated team of Community Champions, who will help local people to find better healthcare solutions for themselves, as well as supporting people with any questions about COVID vaccination. Voluntary community efforts to support our needs for mutual help, mental health support and shared creativity remain invaluable.

As we head into the third year of the pandemic, the government is ending countermeasures, but there is much we can do as individuals and as a community.

*Dr Robert Busch is an immunologist at the University of Roehampton. He has worked with local NHS organisations and community volunteers to organise "Roehampton COVID-19 Question Time" Web panel discussions to share information about the state of the pandemic and vaccinations. The scientific information in this article has been fact-checked by the SW London NHS Clinical Commissioning group.*



## Hope

Close your eyes and hear the sound of hope flowing through the air.  
Hope looks at me with a bright smile saying there is nothing to fear.

A life filled with contentment that flourishes everywhere.

Love and joy fills the air, bringing abundance for all to share.

Hope takes your hand and leads the way.

Whispers in the air of hope everywhere.

Run with me with full delight and whenever you feel in doubt,  
that's when hope will appear.

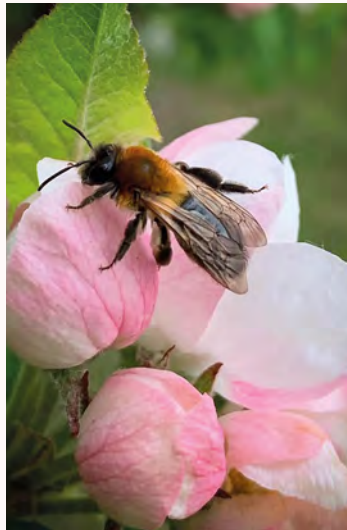
*Elaine S.*

## From Bargain Booze to Richstone

by John Horrocks

Remember the Bargain Booze supermarket in Roehampton High Street? It closed last year. But, after extensive building work, we now have the offices of the local developer, Richstone Properties. They have installed a smart new shopfront.

And, as a welcome gesture from the borough council, one of the new monumental flowerpots has been placed on the wide footpath outside the Richstone frontage.



## Jubilee Concert

5.30 pm on Sunday 5th June 2022

Holy Trinity Church, Roehampton  
with Music, Dance, Song & Poetry

***Celebrate with us the Platinum Jubilee of Her Majesty Queen Elizabeth 2nd***

Come and join us in the fun  
of this historic Occasion

We will make a song & dance  
about it!

Entrance £5.00  
Light refreshments included

## Age Well Roehampton – the Latest

Since our last entry, our membership of over 55's in Roehampton has increased and offers from members to volunteer and run (co produce) activities have also increased.

Opportunities exist to join in and enjoy activities, alongside opportunities to volunteer and facilitate activities

### Current Activities Include: (ask Jenny for details)

- Creative Writing
- Silver Surfing
- Monthly walks
- Monthly quizzes
- Make and Mend/stitch and sew classes
- Chair Yoga
- Foot Health

### Forthcoming Events: (ask Jenny for updates)

- Local History Talk at Whitelands College – Wednesday 13th April 1.30 for 2pm meet in Reception. Holybourne Avenue SW15 4JD (Parkstead House) Refreshments included
- Expanding our monthly quiz session to a second quiz session at Grosse Way Clubroom – details to be advised
- Platinum Jubilee Celebrations – Royal Quiz – details to be advised
- Platinum Jubilee Celebrations – Musical Event – details to be advised
- Money Matters – talks – details to be advised
- Connaught Opera (funded by City Bridge Trust) is performing on 30th June at Lennox clubroom Ludovic Walk, SW15 5LE at 12.30 with refreshments

**Call me to join up to receive notifications of all forthcoming events and details of existing sessions – no membership fee**

**Nothing to lose everything to gain!**

All sessions that run are very friendly, welcoming and fun. This service is now becoming very interesting as restrictions are lifted and more opportunities present themselves. Many thanks to all members for their support during the lockdown period and many thanks also to other organisations that have helped this service to develop – but we still have more to do!

**Jenny Bailey**  
Age Well Coordinator Roehampton  
[jenny.bailey@hestia.org](mailto:jenny.bailey@hestia.org)  
**07826 779 684**  
**(Monday to Thursday)**



# FUNERAL DIRECTORS AND MEMORIAL STONEMASONS

## OUR FAMILY HELPING YOUR FAMILY

For over 240 years, seven generations of the Lodge Family have been proud to help local families in their time of need. We provide all funerals, whether modern, traditional, green or alternative, with care and compassion.

### NOW OPEN IN ROEHAMPTON

15 Roehampton High Street SW15 4HL  
020 8016 5651

[www.lodgebrothers.co.uk](http://www.lodgebrothers.co.uk)



Andrew & Robert Lodge with their eco-friendly hybrid funeral fleet



*"Wonderful empathetic service. Absolute kindness and professionalism, could not recommend highly enough."*  
by Catherine

**Lodge**  
BROTHERS 1780  
*the family you can turn to*



ASK ABOUT OUR  
PRE-PAYMENT  
FUNERAL PLANS

FLORAL TRIBUTES • FUNERAL PLANS • WILLS & PROBATE

I've got all  
my affairs  
in order

### FUNERAL PLANS

- Last year, 63% of people made financial provisions for their funeral before they passed away.\*
- Only 64% of these people made provisions that covered the cost of the whole funeral, so their loved ones may have had to pay the rest.\*

Spare your family the burden of worrying and second-guessing what decisions to make when their emotions will be hard enough to manage.

#### A fully personalised Lodge Brothers Funeral Plan gives you:

- ✓ Protection against the rising cost of funerals – you pay TODAY's price
- ✓ No additional cost for your family
- ✓ The funeral YOU want, conducted by Lodge Brothers Funeral Directors
- ✓ Personal and professional service by NAFD qualified staff
- ✓ Interest free monthly payment options
- ✓ All funds held securely in a Trust Fund
- ✓ Peace of mind for you and your loved ones

Getting your affairs in order now by making a 'later-life' plan doesn't need to be daunting or morbid.

Our friendly team will guide you  
every step of the way.

Call us on 020 3540 6660

**Lodge**  
BROTHERS 1780  
*the family you can turn to*

\* Sunlife (2020) Cost of Dying Report, [sunlife.co.uk/costofdying2020](http://sunlife.co.uk/costofdying2020)