
ROEHAMPTON VOICE

AN INDEPENDENT SOURCE OF NEWS, BY AND FOR ROEHAMPTON RESIDENTS

ISSUE 50 | WINTER 2022-23



Pierre Okyere, p.4: Good Things Happening in Our Neighbourhood. Photo: Alex Gautier

A READER'S LETTER

Dear Editor,

I am saddened and angered to hear of the unnecessary death of Awaab Ishak, a two-year-old whose life was cut short because of mould in the social housing flat where he lived.

I am angered because this situation is shamefully not unique. This is the reality for many of us housed in the 'degeneration zone' whilst the Council has squandered millions on grand plans for 'Regeneration'. Grand plans that exist only as architectural proposals emblazoned on glossy pamphlets, long since consigned to barren landfills.

How many more avoidable deaths will it take before people are valued more highly than profit? Will the next national headline expose the failings of our own Local Authority who could have prevented such deaths? We don't want to hear that lessons have been learned. Platitudes do not save lives.

Immediate and urgent repairs need to be carried out now. Real people are living here. Real people are living in precarious conditions right now. Our lives are not on hold until the glimmering fantasy of 'Alton Green' appears 10 or 20 years down the line. We have mould and damp and flooding in our flats. We are exhausted and fatigued because we have been living in uninhabitable conditions for too long. And for too long a negligent Council has perpetuated a system of 'managed decline' with utter disregard for our lives.

If the new Labour administration fails to address the urgency of these issues, why should we trust them any more than the Conservatives? If Labour does have a plan for the next 4 years, it must **prioritise and deliver** the urgent repairs to housing which their predecessors have deliberately run-down.

We do not need the mirage of new unaffordable houses. We do not need a monument to the aspirations of the privileged few. **We need a safe place that we can call home.**

Yours,

A lifelong resident of the Alton Estate.

If you have been directly affected by housing issues or the cost of living crisis, please share your stories and images with us to be published in the forthcoming issues.

See pages 6-7 for updates and feedback on the regeneration.

Route 430 – Christmas Day – Free Vintage Bus Service

A free vintage bus service will run again on Christmas Day 2022 between Roehampton and Putney Bridge Station, staffed by volunteers from 1950s Vintage Bus Hire.

There will be a bus every 30 minutes, leaving Roehampton Danebury Avenue at 09:30, 10:00 and every half hour until 15:00, and leaving Putney Bridge Station at 10:00, 10:30, and every half hour until 15:30.

Buses will serve all the usual route 430 stops between Roehampton and Putney Bridge. The old buses are not fully accessible, so children's buggies will need folding.

The vintage buses are London Transport 'RT' types, the standard 1950s London double deck bus, of which over 7000 were made. Do go out and visit a pub, church, friends and family, enjoy a walk by the river at Putney, or just take the children for a ride!

Full timetable at www.1950s-Vintage-Bus-Hire.co.uk

ROUTE 430 - CHRISTMAS DAY - FREE 1950s VINTAGE BUS SERVICE

Roehampton - Dover House Rd - Upper Richmond Rd - Putney High St - Putney Bridge Station

Roehampton Danebury Ave	0930	1000	1030	1100	1130	1200	1230	1300	1330	1400	1430	1500
Roehampton Medfield Street	0933	1003	1033	1103	1133	1203	1233	1303	1333	1403	1433	1503
Dover House Road, Crestway	0935	1005	1035	1105	1135	1205	1235	1305	1335	1405	1435	1505
Putney Leisure Centre	0941	1011	1041	1111	1141	1211	1241	1311	1341	1411	1441	1511
Putney Station	0945	1015	1045	1115	1145	1215	1245	1315	1345	1415	1445	1515
Putney Bridge Station	0950	1020	1050	1120	1150	1220	1250	1320	1350	1420	1450	1520
Putney Bridge Station	1000	1030	1100	1130	1200	1230	1300	1330	1400	1430	1500	1530
Putney Station	1005	1035	1105	1135	1205	1235	1305	1335	1405	1435	1505	1535
Putney Leisure Centre	1009	1039	1109	1139	1209	1239	1309	1339	1409	1439	1509	1539
Dover House Road, Crestway	1015	1045	1115	1145	1215	1245	1315	1345	1415	1445	1515	1545
Roehampton Medfield Street	1017	1047	1117	1147	1217	1247	1317	1347	1417	1447	1517	1547
Roehampton Danebury Ave	1020	1050	1120	1150	1220	1250	1320	1350	1420	1450	1520	1550

Sorry these 1950s buses are not fully accessible. We will help with buggies, but they will need to be folded up. The vintage bus serves all normal route 430 bus stops between Roehampton and Putney Bridge. This service is run by www.1950s-vintage-bus-hire.co.uk. It is not run by or on behalf of Transport for London or London General.



ADVERTISING

We are still looking for someone to help with finding advertising for Roehampton Voice. We have expanded from 12 to 16 pages and it is important that we have more advertising income.

CONTACT

Roehampton Voice is published by Roehampton Trust, a charity aiming at improving life in Roehampton. If you are interested and can help, please contact the Chair Tim Morris, either on **07990 570785** or on info@roehamptontrust.org.uk or roehamptonvoice@hotmail.com

ROEHAMPTON VOICE: ISSUE 50

ADVERTISING

Advertising in the Roehampton Voice represents exceptional value for money. For the very reasonable rates below, you can reach 6,150 households throughout Roehampton.

RATES

£25 for 1/8 page
£50 for 1/4 page
£100 for 1/2 page
£200 for a full page

EVENTS

Please pass us details of your events, for inclusion by **11 March 2023**.

SUBMITTING ARTICLES

The Roehampton Voice is keen to have input from as many local people as possible. If you would like to write an article for us, please email the Editor, Dez Mendoza at roehamptonvoice@hotmail.com by **11 March 2023**.

You can follow us on Facebook, or tweet @RoehamptonVoice and visit our website roehamptonvoice.org

Roehampton Councillors' Report

by **MATTHEW TILLER, JENNY YATES and GRAEME HENDERSON**

Another busy three months! We have continued to support local residents in very challenging circumstances. The Cost of Living is clearly taking its toll on many residents, so the £5m fund created by Wandsworth's Labour Council will provide a lifeline to many local residents and community organisations that support the members of our community most in need. We are setting up Warm Hubs where residents can go to keep warm, and where a range of services will be available to advise people. The Library in Danebury Avenue and the Children's Centre at 166 Roehampton Lane are the two main Warm Hubs in Roehampton. More information can be found on the Wandsworth Council website wandsworth.gov.uk

We have continued to engage with the local community on many levels. Well-attended Advice Sessions were held at Roehampton Library on the first Saturday of every month, 11am-12pm. Advice was given on a wide range of matters, although, as usual, housing problems dominated most residents' concerns.

We are continuing to engage on plans for the Roehampton Regeneration. The Council have appointed consultants Inner Circle, who specialise in refurbishment and retrofit. They will advise on options for plans that will benefit local residents as opposed to property developers.

The Labour Council have ambitious plans to provide another 1,000 council homes to start to combat the Council's housing waiting list of 11,000 families and 3,500 children who have no permanent home, inherited from the Conservative administration. Exhibitions of Labour's plans for much needed new housing have taken place at Bessborough Road, Aubyn Square and Toland Square. The councillors were on hand to engage in constructive discussions with local residents.

Fleur Anderson (MP for Putney and Roehampton) organised a very successful and well-attended Jobs Fair at the Roehampton Leisure Centre. This provided local residents with help to get on the jobs ladder or to return to work. We also had a very productive meeting with the Ahmadiyya community.

We have received requests from some residents for electric vehicle (EV) charging points on Council housing estates. If you have an EV or are thinking of getting one, please do fill in this short form on the Council's website requesting a charging point – this will help the Council know where the demand is and prioritise the installation: wandsworth.gov.uk/roads-and-transport/transport/sustainable-travel/electric-vehicles/#request

Currently the Council is running a pilot scheme to install EV charging points on the Ethelburga and Fitzhugh estates. You can read more about the Council's EV charging point strategy on the website.

Finally, it was great to see local residents and activists including Iori Harries (Roehampton Community Shed) recognised at the Mayor's Civic Awards.

Our contact details are:
cllr.m.tiller@wandsworth.gov.uk
cllr.j.yates@wandsworth.gov.uk
cllr.g.henderson@wandsworth.gov.uk



Cllrs Matthew Tiller, Jenny Yates and Graeme Henderson at the Roehampton Christmas Market held in Portswood Place



Jenny as a Shepherd, Matthew as an Angel and Graeme as a Wise Man, in a nativity scene painted by Ben Speedy of Estate Arts, in collaboration with the Community Shed and Holy Trinity Church, Roehampton.

Roehampton Voice Reader Survey – Tell Us What You Think

Dear readers,
Help us assess the value of Roehampton Voice to you – the Roehampton residents. Scan the QR code or hit the link below to fill in our questionnaire! Please give us ideas on how to improve the Roehampton Voice!

 shorturl.at/BGIVZ



Good Things Happening in Our Neighbourhood

by ALEX GAUTIER

I was delighted to read in SW15.com about Rosslyn Park's new initiative with the police starting in January 2023; the free sports clubs, for children living near or on the Alton Estate is aimed at reducing their risk of gang grooming and will hopefully prevent this from happening.

Of course, Anita Russell, driving heart of **The Dover House Lions Football Club**, has been doing something very similar to that for years. Not necessarily free, as she has to pay Wandsworth Council rent, but if any children don't have money to participate, the money is found from somewhere. Here is a story about one of Anita's successes, **Pierre Okyere**, who is featured on our Winter Issue cover.

Pierre arrived in England with his family 15 years ago, his Ghanian parents having first travelled to France where Pierre was born, before finally arriving in London. Pierre heard about the Roehampton Playing Fields from Eddie Leroux, Chair of the Dover House Lions Football Club, at the Sacred Heart School on Roehampton Lane where Pierre first attended school after arriving here. Whilst studying chemical engineering at UCL, Pierre continued playing football with the club, rising to semi pro status.

Successfully working as a data analyst, Pierre returned to Roehampton Playing Fields and coaches a team of boys, and one girl who he is really impressed with. Certainly, when watching the football players practise, I noted their impressive manoeuvres that I would not have expected from such young players. Pierre is one of several who have come back to coach, giving back to the community that gave them a springboard in life, and is putting his heart and soul, just like Anita and Eddie, into children's futures.

Football is the heart, the magnet, of the playing fields. That said, when families bring their children for football practice, there are often younger and older siblings that have to spend a couple of hours doing... nothing? Think again!

Just past the pavilion you see boxing and strength building. About 30 tennis racquets were found in the pavilion, so other neighbours are coaching these bored siblings to become potential tennis stars. There is Kaya who is practising on the somewhat run-down tennis courts with the objective of becoming the next Serena Williams. Or an Afghani family whose daughter is building her hand to eye co-ordination and tennis skills with impressive speed. Her younger brother, Mustafa, is also building strength in his four-year-old arms, though football might be his ultimate goal. Some of the parents get involved in playing or coaching too – picking up the tennis balls appear to be the parents' job. I would say synergy is the word! There is a veritable multi nations meeting on those playing fields every Saturday morning and everyone seems to be having a darned good time.

Certainly, that is one of the advantages Pierre commented on. It did not matter where you were from, being part of a team was what mattered and helped him build his confidence to go on to bigger and better things, and to give back.

If anyone is interested, go to the playing fields at 10am on a Saturday and ask for Anita or Eddie. It is best to start in September at the beginning of the season, but no matter when, they will find a way of making it work. Why don't you try it?



Kaya who has every intention of living up to Serena Williams' achievements



Mustafa, his sister and the coach



Boxing training

Celebrate Christmas with Holy Trinity Church

by the Revd Claire Whitmore

Have you seen a shepherd in a supermarket or a wise man in the chemist? The people in the story of the first Christmas can be found all around Roehampton during December, as part of Holy Trinity Church's Christmas Trail. Pick up a trail passport at the library, Cafe Joy, or Holy Trinity Church to guide you with the search, then pop in to each place you find a nativity character to fill your passport with stamps. You can get a chocolate prize by bringing your completed passport to the Christmas Eve Crib service at 5pm, when we will tell the whole Christmas story all together - come dressed as your favourite nativity character.

Thinking about the Christmas story in this way reminds us that Jesus was born in a situation quite like our own today - when people struggled to make ends meet and were worried about the future. In the middle of sadness and anxiety, something amazing happened: God came to earth in the form of a tiny baby, to bring joy and hope to the whole world.

Each December we remember the journeys made by Mary and Joseph, the Shepherds and the Wise Men, all culminating in the Christ child lying in a manger that we celebrate on Christmas day. We renew our hope that God is making all things new, and bringing about a world of justice, peace and joy. At Holy Trinity Church, we mark this season of preparation for Christmas by lighting a new candle on our Advent wreath each week at our Main Service at 10am on a Sunday - all are welcome. You might also like to join in with carol singing around



Ali and Revd Claire at the Roehampton Christmas Market.

Roehampton, meeting by the Christmas tree at the top of Danebury Avenue at 6pm on 20th December.

On Christmas Eve, we have our Crib Service at 5pm, and then Midnight Mass, a beautiful and traditional candlelit service with Christmas Carols and Holy Communion, starting at 11.30pm. On Christmas morning, our Main Service is at 10am, and will have communion, carols and lots of festive joy.

In the New Year, keep an eye out for our Epiphany Stars giveaway on Danebury Avenue: choose a wooden decoration with an inspirational word to be your guiding star for the year 2023. We'll also be hosting our fourth Campfire gathering, with songs, storytelling and s'mores on 14th January- do join us as we think about stars, inspiration and wise people.

Roehampton Christmas Market SNAPS



Jean & Eunice



Kathy & Maureen



Tessa



Tanya & Nina



Val





Wandsworth Council Update on the Alton Estate Regeneration

The existing plans for the Alton Estate regeneration have been put on hold while the council explores new, alternative options for the area.

The new council administration took control of Wandsworth in May of this year and have brought with them different priorities and ideas

As result of decisions taken at the Housing Committee on 29 September, proposals that align more with this administration's priorities will be reported to a future Housing Committee.

Councillor Aydin Dikerdem, Cabinet Member for Housing, said:

"The council remains committed to invest in and improve the Alton Estate, but we will review the proposed outcomes for this investment and explore what options there are to achieve these."

The council has appointed Inner Circle Consulting to assist with carrying out an options appraisal for the wider Alton Estate. This review will define the council's objectives for the estate and shortlist options based on what will best achieve these objectives. The council hopes to start community engagement on the shortlisted options in the summer of 2023.

Wandsworth Council's Housing Committee has recently supported recommendations to bring forward proposals for improvements to the Alton Estate, which include enhancing and upgrading the landscaping and play spaces at Downshire Field and Alton Activity Centre.

Council staff are also exploring the potential to deliver 'Block A' on the site of the former Co-op on the corner of Danebury Avenue and Roehampton Lane, as a stand-alone scheme at the earliest opportunity.

As a further demonstration of the council's dedication to estate residents and visitors and our commitment to improving the area, the Alton Regeneration Team will continue to run community engagement events.

If you would like to provide any feedback, please get in touch with the team:

Email roehampton@richmondandwandsworth.gov.uk

Telephone **020 8871 6207**.

If you would like to discuss anything in person with a member of the team, please contact us to arrange an appointment.

Alton Action Statement

altonaction.org @AltonAction

Alton Action welcomes the recent decisions taken by Wandsworth Council relating to the regeneration of the Alton Estate, in particular:

- The termination of the procurement process for a partner to deliver the Alton Estate Masterplan (2014)
- The commitment to invest in and improve the Alton Estate
- The review of both the objectives and options for improvements to the Estate

We note that the Council 'has no predetermined views about the way forward and nothing, at this stage, is ruled in or ruled out,' and that the Council believes that 'more should be done to ensure (that) the proposed community buildings meet current and future demands of the area.'

However, we are concerned that 'nothing being ruled out' means that a disastrous plan based on mass demolition, huge disruption and intensification of housing is still possible. We are alarmed that the Council's approach will solely be to 'call on the expertise of both external experts and officers to identify options'....'to improve the estate and the lives of the people that live there.' We are also concerned that the 'first step in (the Council's) commitment'... 'to bring forward an early phase to deliver new community facilities and new Council homes' risks excluding residents and other local stakeholders from determining what is needed first.

Alton Action believes in citizen-led development; through this approach, the lived experience and expertise of residents and other local community stakeholders are used to determine the outcomes and developments that most effectively meet the needs of the local community. Any process to identify options to improve the Alton Estate must be led by the residents of the estate and other local community stakeholders.

We therefore demand that:

1. A citizen participation process, to facilitate and enable residents and other local community stakeholders to lead the development of options for the future of the Alton Estate, including any early phase development, is established without delay
2. This citizen participation process is designed to maximise the active participation of residents and other community stakeholders and is designed with and by them, including regular in-person workshops and a physical space where ideas, proposals and announcements can be viewed throughout
3. The process is supported by Council officers, and other agents that they wish to employ, but led by residents and other community stakeholders
4. The process is maintained until final decisions about the future of the estate are made
5. No future options should be considered by the Council before residents and community stakeholders have fully considered, shaped, and commented on them
6. Residents and community stakeholders are supported to take an active role in the final decisions about the future of the estate.

If you have been directly affected by housing issues or the cost of living crisis, please share your stories and images with us to be published in the forthcoming issues.

More development, it Never Ends on the Alton East?

by STEVE FANNON

On the 14th November 2022 there was a 'drop in' held by Wandsworth Council to discuss the potential for new housing on the Alton East in the Manresa neighbourhood and on Bessborough Road near the new development. Unfortunately not all properties were notified directly of this 'drop in' which is a challenge I have put to the Council and the consultants used for any development will have indirect impacts on other residents on the Alton East, for instance, the current Fontley Way development has placed yellow lines around the Ibsley Gardens area and consequently cars now park on a grassed area where they formally did not.

The image in the top right corner is taken from one of the publicity materials highlighting where these works are proposed. If you have not seen the current proposals please do have a look at the following website - www.bessboroughroad-farnboroughhouse.co.uk

Presently the following six points should be considerations for the new buildings:

1. Car parking – some of the newer developments have proposed no car parking which is concern especially when the Council's two recent developments have created a net loss of car parking space, so far at least nine spaces have been lost.
2. Public transport – how can it be that the Labour Party is seeking to increase the



population on the estate when it is frequently highlighting deficiencies with the current public transport offering?

3. Density – this is confusing for the Labour Party stated in its 'What Roehampton wants' survey regarding the 2008 regeneration attempt that "There is also a legitimate debate to be had as to whether the Alton estate – already the most densely populated part of the constituency – should be the focus of hundreds more homes. Love it or hate it, one of the things that cannot be denied about the Alton is that it was meticulously planned to provide green open space surrounding the blocks and avenues of council housing. The Council plans irreparably damage this plan by building on the green space and over-populating the estate".

4. Green space – referring to the previous point, residents have time and time again highlighted the green space is considered important.

5. Loss of light – Kimpton House was adversely impacted by the Fontley Way development and it is hoped other blocks in the area do not suffer the same fate (and remember, if a leaseholder you might have "the right to the access of light" clause

6. Money wasted – garages in the area are currently undergoing renovations only for Rushmere House and Farnborough House garages to be potentially demolished and various Small Improvement Budgets that came from the former Kimpton House/ Rushmere House Residents' Association will likely be adversely impacted.

In any event, it's wondered whether any due consideration will be provided for existing residents, not just in the immediate area of development though the wider area.

Planning application reference	Property	Flats	Total number of people	Car parking spaces	Including disabled	Cycle spaces
2017/6977	Petersfield Rise/Bessborough Road, SW15 4AE	10	46	-19	1	20
2019/4697	Former One O'Clock Club	14	78	10	2	30
		24	124	-9	3	50

Roehampton Regeneration

by MIRIAM HOWITT

As the Conservatives have delivered to every house in Roehampton Gate and Roedean Crescent a leaflet with the title "Why has Labour scrapped the Roehampton Regeneration" (which is totally untrue) I hope you will think it appropriate to share the truth.

Cllr. Ravi Govindia, when he was Leader of Wandsworth Council, commissioned Redrow to design and cost a scheme produced in 2019 which demolished every one of the 10 huge blocks of 4-storey maisonettes and flats, shops, the library and 9-storey Allbrook House in the centre of the internationally famous parkland Alton Council Housing Estate. They planned to build instead 6,7,8,9-storey closely-spaced blocks of flats for people who could afford to buy at current market prices, and only one for Council tenants. They designed a grand, huge, Library with dozens of computer desks for public use (whereas now most people have laptops and mobile phones). It would involve compulsory purchase of all the homes that Council Tenants had bought under the "right to buy" scheme which would cause great

distress and hardship to the Lease Holders and cost Wandsworth Council over a million pounds.

The demolition would contribute greatly to Global Warming.

Meanwhile Battersea, Nine Elms and the Wandsworth bank of the river Thames have been developed with closely-spaced high blocks of flats to house those who can afford to buy and rent them and the same is in progress in Wandsworth town.

The Alton blocks threatened with demolition are identical to others on the rest of the Alton Estate which have been successfully renovated.

When Redrow pulled out, Cllr. Ravi Govindia bought the rights to the scheme at considerable cost, intending to commission others to build it. Thankfully the new Leader of Wandsworth Council has abandoned the Redrow Scheme and is assessing what the residents of Alton Estate really want besides renovating existing homes, as they have done to the other identical blocks on the Alton Estate. Potential sites for smaller developments throughout the Alton Estate (which will not have a negative effect) are being considered for additional housing and social amenities.

The 5 points on the Conservative petition will mostly be met but keeping the popular existing Library.

The Roehampton Community Box

by **MARIANNE ATTERBURY**

As the cost of living continues to bite, a community enterprise in Roehampton is quietly expanding its hours to help local residents manage their food costs.

The former office block at 166 Roehampton Lane looks a lot like a supermarket, but it's no ordinary shop. This is a social supermarket, run by The Roehampton Community Box, where local people can register, schedule a visit, and pay £4 to "buy" about £30 worth of food once a week.

It's a step up from a food bank as people pay something for their shop, and they choose what food they want to take home. And fruit and vegetables are always free.

"This really helps," says Jazz Morris, who was shopping recently with her 2-year-old daughter. "My kids eat a lot of fruit and veg—and it's free here." She says her family's regular supermarket bills have risen from £100 every two weeks to about £160, so she's delighted to have a cheaper place to shop.

Christina Bishop, another shopper, finds she has had to cut back on family's activities as costs rise, and feels badly that she can't give her college-age son pocket money when he goes out. The family does, however, enjoy what she calls "a poor man's roast dinner," which has all the trimmings of a roast dinner—potatoes, Yorkshire pudding, gravy and vegetables—but she makes it with sausages, cheaper than a roast. "The kids love it," she says.

Open on Wednesdays and now also on Thursday mornings, The Roehampton Community Box social supermarket has been operating since May. It grew out of a joint venture between the local youth charity, Regenerate, and the sports charity, Rackets Cubed, who began to distribute free food boxes to Roehampton families struggling to buy food in the early days of the pandemic in 2020.

In its first six months as a supermarket, 300 families have signed up to shop at the Roehampton Community Box. About 140 shoppers visit each week. To qualify, shoppers must live in the SW15 postcode or have a child enrolled in a school in the SW15 postcode, says Johanna Afors, who heads the effort for Rackets Cubed.



Advent Calendars Arriving at the Roehampton Community Box

The result is three rooms with neatly stacked shelves full of staples such as rice, pasta, tinned goods; freezers with treats such as pizzas, bags full of chopped sweet potatoes; a cooler for packets of meat; and stacks of fresh vegetables—potatoes, tomatoes, carrots.

An orderly queue of shoppers begin to line up as their allotted 1 hour time slot nears, and volunteers keep the shelves stocked with the day's offerings.

To sign up, email communitybox@racketscubed.com.

To donate food, email communitybox@racketscubed.com.



The Roehampton Community Box: helping our community during the Cost-of-Living Crisis

by **JOHANNA ÅFORS**

The Roehampton Community box was set up during the pandemic to provide local families with extra food. Initially we delivered and distributed the boxes via local primary schools and nurseries. To date we have handed out over 17,000 boxes which equates to approximately 1.5 million meals!

In May 2022 we opened our social supermarket. The idea stemmed from wanting to give our families a choice in what they took home instead of just handing them a ready-made box. This has proved to be very popular with our families and since we changed to the shop model we have helped over 250 families and we are currently supporting 140+ families within the Roehampton area.

We operate a self-referral system, but you must live within the SW15 postcode area. To help us manage stock levels everyone must sign up for a one-hour timeslot. We ask for a contribution of £4, but for that

Warm Wednesdays

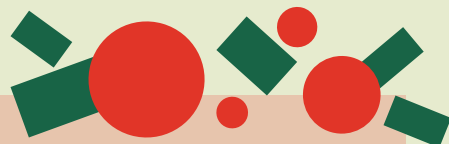
A new community drop in afternoon for Roehampton residents opens in January 2023. Warm Wednesdays will run weekly from 2-4pm on Wednesdays at Roehampton Methodist Church at Minstead Gardens. A joint project run by Holy Trinity and Roehampton Methodist churches, the drop in is open to all.

As well as space to chat over a cup of tea, there will be a selection of board games to play, jigsaw puzzles to solve together and newspapers to read. A children's space with toys and colouring activities will provide fun for little ones. Hot drinks, toast and fruit will be provided free of charge every week for everyone who comes.

As the weather gets colder, Warm Wednesdays provides a place to keep warm without the heating on at home, as well as somewhere to meet friends in the community.

Why not pop in for a cup of tea either side of the school run, or bring a friend to play a board game and have a catch up?

For more information contact the Revd Claire Whitmore: claire@holyltrinityroehampton.org



contribution each customer gets approximately £30 of groceries.

Most of our groceries are donated by other charities. We get the bulk of our food from the Felix Project but we also get regular donations from the Dons Local Action Group, The Ahmadiyya Muslim Association, The Wandsworth Hygiene Bank and several local schools and faith groups. We also purchase a range of groceries from local supermarkets to maintain our stock levels.

WHEN: Every Wednesday and Thursday mornings from 9.45 – 4.00pm

BUT you must book in advance.

WHERE: The Roehampton Centre, 166 Roehampton Lane, London SW15 4HR

WHO: Anyone living within the SW15 postcode area.

WHAT: We have a selection of groceries including fresh produce, tins, pasta, rice, cereals, toiletries and cleaning products.

If you would like to sign-up please email communitybox@racketscubed.com and we will email you the link.

At the Roehampton Community Box we are always seeking new sources of food. If you would like to make a donation to the Roehampton Community Box, please email: communitybox@racketscubed.com



Orode Faka telling *The Tale of Twenty Twenty*

Please Keep the Communiversity Going!

by ALEX GAUTIER

The *Tale of Twenty Twenty* play described in the autumn edition of Roehampton Voice was enjoyed by all on 4th October. Orode Faka led the audience through the story with the assistance of her students, and we were delighted by a recital of poetry by Mya Onwugbonu.

The mobile stage and display units worked exactly as planned. Great engineering by Fabric Space Architects. Even the sun decided to shine on the event. It was enjoyed by all and hopefully this was just the first of many events to be enjoyed thanks to Dr Glenn Odom's efforts through Roehampton University.

If used, this could be a real asset to the community. So please keep it in mind for events you may have planned when the weather warms up next year. You can email glenn.Odom@roehampton.ac.uk to check on availability of the stage.



Mya Onwugbonu reciting her poem

Reflecting on days past – and looking forward to a busy autumn and winter

by VAL JONES
Putney Society Community Panel

The extreme heat of the summer, with its record-breaking temperatures, brought many challenges for humans and plants alike. Roehampton is fortunate to have so many beautiful trees, which gave welcome shade and respite from the heat to many - they need our help and care to thrive. And while it was lovely to have bright sunny days, often lacking in an English summer, I for one welcomed the cooler days of autumn as we transition towards winter - residents will have seen the newly planted tubs and refreshed troughs which brighten up the area. Thanks to all who create and tend these.

SW15 is a great part of London to live in – varied, multicultural, lively and interesting in so many ways, and with a strong tradition of community involvement. Local organisations – old and new - faced the pandemic with strength and ingenuity, finding ways to bring people together to develop and strengthen support.

Members of the Putney Society, which includes Roehampton in its Constitution, are delighted to be part of Roehampton's community work and its lively spirit. Here are just a few things we help with . . .

- Active members of Roehampton Response Network and other community groups
- Help on the Friday Information Stall, and publicise information from it
- Publicise Mount Clare's Georgian Temple and its restoration – did you know we have



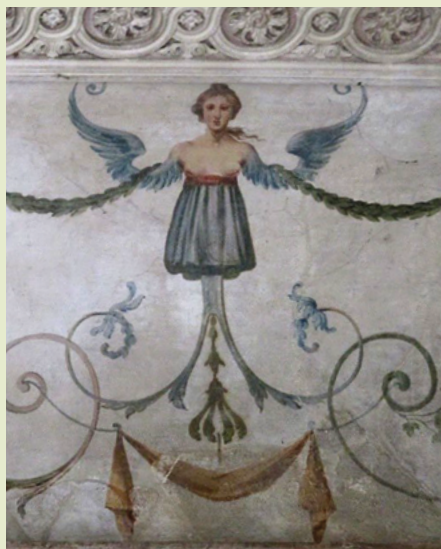
Mount Clare Temple awaiting restoration



this beautiful historic gem on our doorsteps in Minstead Gardens? (photos courtesy of Andrew Catto). The Temple is closed for restoration – funds are being raised for this vital work but more is still needed to make the Temple a community asset again. Do you know of anyone who might help?

- Publicise the excellent artwork at the junction of Danebury Avenue, and helped with events for the Queen's Platinum Jubilee
- Help to plant and maintain the memorial fountain flower beds
- Support local charities, through hands-on help and with donations
- Organise litter picks around Roehampton
- Participation in Roehampton Safer Neighbourhood Team meetings with police
- Helping to plan and take part in Christmas community events

We want to do more . . . and we could if we had more members . . . Membership is open to all in SW15 area - and we'd love to increase our membership in Roehampton. As a member you will receive a monthly Bulletin with local news and events, a Discount Card for use in many independent shops in Putney, a chance to join in the Society's monthly Panel and public meetings, from just £12.00 a year (various payment options available – please see website www.putneysociety.org.uk or phone Val for details: **07780 674114**)



The beautifully decorated ceiling of the Temple

Roehampton Health Question Time meeting hears about unmet needs, available services and staying healthy this winter

by LYNNE CAPOCCIAMA, Dr FARWA HASAN and Dr ROBERT BUSCH

On 27th November, Estate Art Roehampton held a "Health Question Time" for residents at the Alton Hall. The meeting covered healthcare, mental health and social needs, the COVID-19 pandemic, and winter wellness. The discussion panel included Dr Hasan, a GP at The Alton Practice; Cllr Henderson, Wandsworth Council cabinet member for Health; and Dr Busch, an immunologist at Roehampton University. Voluntary organisations provided stalls, and Community Health Champions recruited by Estate Art helped to set up and run the event. Lynne Capocciama, founder of Estate Art, introduced the event. The Question Time was well attended by a cross-section of Roehampton residents; the lively discussion is summarised here.

SHORTAGES IN HEALTHCARE, MENTAL HEALTH AND SOCIAL SUPPORT

Roehampton faces shortfalls in healthcare, mental health and social support. This mirrors national trends: for the past decade, the gap has widened between the rising demand for these services and the funding and staff available. The UK population has grown and aged and increasingly suffers from long-term illnesses. Diagnosing and treating these diseases has become more complex and expensive. Happily, this has allowed more patients to live longer and better lives despite long-term illnesses. Roehampton has many people from under-served communities and people living with long-term illness, so our area is particularly affected by these trends.

Funding and staffing have not kept pace. NHS staff hired in past decades are now retiring; the training of new staff takes a long time (13 years to train a GP) and numbers have fallen short. Immigrant staff have become harder to recruit. In other areas, cuts have been more severe. Health Visitors for mothers during pregnancy and infancy have seen funding cut by 90% in recent years.

Mental health needs are under-served. Talk Wandsworth is a local provider, but demand is so great that they are limited to suicide prevention and short-term interventions in severe cases. Other services have been cut because they have not been used enough: social prescribing via the Macmillan cancer charity is one example. Local youth services and spaces have had to close for similar reasons.

CAN “SMARTER” USE OF HEALTHCARE SERVICES HELP?

Dr Hasan, who is co-Clinical Director of the local Primary Care Network, has led efforts to improve healthcare here. To make up for the shortage of GPs, other healthcare professionals, who previously were based in Hospitals, are now working in Primary care. Patients sometimes feel that a GP would provide better care, but this is not always the case. For example, a third of GP appointments are for back pain and joint problems, which can be dealt with safely and effectively by a Physiotherapist. The Physiotherapist at the Alton Practice is trained to take patients’ history, order investigations, and diagnose conditions that need specialized care. This service has spare capacity. For other conditions, a pharmacist or nurse can help. Receptionists at The Alton Practice are trained and competent to refer patients to the right person. The Alton Practice is also pioneering the use of online consultations. In addition to calling by telephone or visiting the GP surgery to book an appointment, having the option to complete an online form to book an appointment, request a sick note or referral, obtain advice or order medications increases the ways in which patients can access healthcare. In addition, Community Health Champions will support residents in becoming more involved in their own healthcare by signposting available help and improving access to services.

The Alton Practice also has several Social Prescribers. Social Prescribers are neither social workers nor medical professionals. They support patients with needs such as isolation, loneliness, weight management, or support with housing and advice about benefits. They offer half-hour appointments for a thorough assessment and have expert knowledge about local community and voluntary sector organizations that can provide health and support. This service is not well known and could be used more.

HOW THE PANDEMIC HAS AFFECTED THE NHS

The COVID-19 pandemic has added to the strain. NHS hospitals and GP surgeries were open throughout but had to look after increased numbers of people in hospitals, some of whom required intensive care or sadly died from the infection. Healthcare staff were highly exposed to the virus; some fell seriously ill or died. The worst outcomes are now less frequent, thanks to COVID-19 vaccines, but many still get infected (about 1 in 40 people across the UK in late October), and hundreds still die from COVID-19 every week. In addition, long-term complications of infection



Attendees at the Roehampton Health Question Time

(long COVID and an increased risk of heart disease) add to the burden. NHS staff who are infected must self-isolate, in order to protect vulnerable people, reducing staff availability. Healthcare also becomes harder to organise if infected and uninfected patients need to be separated. GP surgeries moved some appointments online or used telephone consultations to reduce the spread of infection. Mental health and social support services became difficult to access, especially during the lockdown periods. The pandemic will not go away, so these pressures will continue to affect healthcare.

HEALTH ADVICE FOR THE WINTER

Dr Hasan advised all who are offered COVID-19 autumn boosters to get vaccinated. People have been concerned about the safety of these vaccines because they have been developed so rapidly, but this is unfounded. They were developed quickly because bureaucratic and funding obstacles to vaccine development were removed, without any shortcuts in safety testing. The vaccines greatly reduce the risk of death or severe illness. Natural infection with COVID-19 increased the risk of long-term problems as stated above, whereas the vaccines do not carry such risks. Dr Hasan emphasised that she would not have carried out vaccinations if she suspected that they were harmful.

The COVID-19 vaccines reduce harm but do not prevent infection. They also require updating to keep up with mutations in the virus. This is similar to annual influenza vaccinations, which are also recommended. Influenza, too, has been spreading again, after a period when measures to stop COVID-19 had also clamped down on influenza infections. Together, COVID-19 and flu vaccines should protect you against the worst lung infections this winter. Although it is not mandatory, you may also wish to continue to wear a tight-fitting face mask to reduce the spread of these infections through the air you breathe.

GP surgeries are open for healthcare checks, including for diabetic foot and other diabetes checks, high blood pressure, and monitoring medications. Those with complex healthcare needs and higher levels of risks are offered PACT (“Planning All Care Together”) appointments this winter. These are phone appointments with GPs to review medications, check on eyesight, mobility and continence and provide advice on staying as well as possible this winter.

TO SUMMARIZE, HELP THE NHS – BY USING IT!

Estate Art Roehampton gratefully acknowledges funding from Wandsworth Council and the South West London NHS Integrated Care Board for the Question Time event and the recruitment and development of Community Health Champions.



Parkside Football Club

by YASMINE THOMSON

Parkside F.C. are a well established local grassroots football club based in Tolworth and compete in the Kingston and District football league. Our home pitch is Tolworth Goals, this is also where we train on Thursdays 18:30 - 20:00 (<https://linktr.ee/parksidefc>).

Games are on Saturdays, with a usual 14:00 kick-off. We are a competitive club built on success and are currently and 5x Kingston and District league winners.

One of our aims this year is to engage even more with our local community. In a bid to do this we are currently running a player recruitment drive (16+) to not only continue diversifying our team, but also provide a support system for men and teenagers in our community.

We provide an affordable and safe space for young people to socialise with positive role models and individuals from various backgrounds with a common goal; enjoying football. Over 50% of our club are under 25 years old. Most of our players who are over 25 have been with the club from the age of 16, with some players having nearly 200 league appearances. We continue to develop our players especially the youth by giving them responsibilities within the club whether that is helping them achieve coaching qualification, giving them management opportunities or giving them roles on the board. By focusing on investing in our youth players, this not only gives them a positive focus but also contributes to the success of our club.

Parkside are looking to add players to their squad, in particular strikers. If you are interested in signing up, please contact Bobby Smith at parksidefc1@gmail.com



Parkside FC in action



Mary Crassweller, 102, with Father Louis Kouevi, St. Joseph's Parish Priest and Esther Opare-Addo

Local Centenarian's celebration of life

by DENISE PANATTONI

On Sunday October 16, 2022, St. Joseph's RC church in Roehampton celebrated the **102nd birthday** of local resident Centenarian, parishioner, **Mary Crassweller**.

St Joseph's Parish priest, Father Louis Kouevi, said a prayer and blessing for Mary and congratulated her on her extraordinary long-life achievement.

May and her husband have lived all over the world in many countries, including Africa, Jamaica and Malaysia. Whenever they lived in England, and since retirement, St Joseph's has been Mary's church - her younger daughter was baptised in St. Joseph's in 1956.

St Joseph's parishioners also joined in the celebrations to congratulate Mary on her 102 years and presented her with a lovely birthday cake and flowers. St. Joseph's also recently celebrated the church's 100-year anniversary and welcomes all parishioners at Sunday masses at 9.00, 11.00 & 6.00 pm and Saturday masses at 6.00 pm.

White Ribbon Campaign

by VICKY PIGGOT

On the 28th of November the SW15 Women's Network held a Torch Parade in support of the White Ribbon Campaign, an international campaign to stop violence against women and girls.

The Mayor of Wandsworth Jeremy Ambache opened the event. Despite the weather residents came out in great numbers. A big thank you to all that attended.





Find out more on our website



Little Village

Donate clothing & kit for children under 5

Where
Eastwood Children's Centre
166 Roehampton Lane
London SW15 4HR

When
Every Monday
10.30am - 12.30pm
Term time only

Little Village supports families with children under 5 through gifts of baby equipment, clothes and toys.

For information on what we can accept go to:
www.littlevillagehq.org/donate-stuff

Items should be washed, sorted and labelled.

If you need support you can also drop in to get a referral, and information about local services.

Little Village, a gift from one family to another.

w : littlevillagehq.org
i : [@littlevillagehq](https://www.instagram.com/littlevillagehq)
t : [@littlevillagehq](https://www.facebook.com/littlevillagehq)
f : [@littlevillagehq](https://www.facebook.com/littlevillagehq)

Registered Charity Number: 1069755






THE ROEHAMPTON WOMEN'S NETWORK INVITES YOU TO

FREE WOMEN'S COFFEE MORNING

Take a break, make friends and find out what is going in your community. **CHILDREN VERY WELCOME.**
Includes **ARTS AND CRAFTS** for everyone.
Up to date information on activities and services for women and families.

Every **WEDNESDAY** from 10am - 12pm @
Alton Activity Centre SW15 4EZ - corner of Harbridge Avenue and Ellisfield Drive

For more details contact:
Verena Nash: verenanash@hotmail.com Vicky Piggot: vicky.marie.piggot@gmail.com

KOS

Academy of Irish Dancing



Spaces now available
In our new larger venue
All ages welcome

Tuesdays @
17:30 - 18:30

£5 per session
(discounts for siblings)

at Alton Community Hall
Petersfield Rise

sw15 4ae



FOR FURTHER INFORMATION
and to book a free trial
katieosull@hotmail.co.uk



New Led Advertising Screens on Metropolitan Open Land

by AMANDA BENZECRY



Recently, ten-metre-high, back-to-back LED screens marketed as 'Richmond Lights' were installed on the Upper Richmond Road, opposite Barnes Common. These two screens replace the three-screen installation dubbed 'The Barnes Landmark' and were the subject of a new planning application.

The site of these screens is designated **Metropolitan Open Land** which should provide protection under statute in order to preserve London's open spaces and the important role these play in our environment. This site is particularly sensitive **given that it is directly opposite a designated nature reserve and within a corridor serving as a critical pinch point for wildlife** connecting the Thames to Richmond Park and the Surrey Hills beyond. We believe that Wandsworth Borough Council's Planning Department, in granting planning permission, once again failed to provide the protection the site deserves.

The screens are illuminated from 6.00 in the morning until 11.00 in the evening, are distracting for traffic and an eyesore for local residents. It seems ironic to us that, in these days of heightened concern for the environment and desire to reduce energy usage, power should be dissipated in this profligate way.



Roehampton Athletic Football Team

Roehampton Athletic

by LYNNE CAPOCCIAMA (Estate Arts)

Wayne and Ashley Baxter set up the football team, Roehampton Athletic in support of their injured brother Craig. The aim in creating the team was to provide something which would be fun and enjoyable, but which would also support and enhance physical and mental wellbeing.

Craig Baxter is now the Manager Roehampton Athletic, which plays at Goals in New Malden, promoting health, fitness, friendly competition and community spirit.

Roehampton Athletic have won three times back-to-back in each division; Division 1, Championship and Premiership. They are sponsored by the Angel pub on Roehampton High Street by Angel managers Sally and Andy, where the teams winning trophies are proudly on display

At the recent awards ceremony on the 4th of November, each player received an award for their dedication to the team. Special awards were also presented for 'Most Improved Player', 'Most Skilful Player', 'Best Attacker', 'Best Defender', 'Best Goalkeeper', 'Top Goal Scorer' and 'Players Player'. **Congratulations to the team**, pictured above!

If you have similar concerns for our environment, then do sign - and share by following the link or scanning the QR code above

<https://chnng.it/4fx4Psmh>



OUR FAMILY HELPING YOUR FAMILY

For over 240 years, seven generations of the Lodge Family have been privileged to help local families in their time of need. We provide all funerals, whether modern, traditional, green or alternative, with care and compassion.

ROEHAMPTON

15 Roehampton High Street SW15 4HL

020 8016 5651

www.lodgebrothers.co.uk



Robert, Chris, Andrew & Michael Lodge



"The staff at Lodge Brothers have been sympathetic, understanding and supportive. They were with us every step of the way throughout a very difficult time and we are and will be forever grateful for their support."

- Mr Robinson

Lodge
BROTHERS 1780
the family you can turn to



ASK ABOUT OUR
PRE-PAYMENT
FUNERAL PLANS

FLORAL TRIBUTES • FUNERAL PLANS • WILLS & PROBATE

WE ARE PROUD TO HAVE OUR OWN LEGAL SERVICES TEAM

Our Solicitors specialise in WILLS, PROBATE and
LASTING POWERS OF ATTORNEY

We are passionate about client care, and will make the process of legal advice easy by speaking in plain English and taking it step by step, removing the stress and giving you complete peace of mind.

All our fees are fixed and agreed in advance
For a free no obligation quote call 020 3540 6658



SOPHIE ANDREWS
HEAD OF LEGAL SERVICES
SOLICITOR



Our professional legal services offer peace of mind to you and your family.

 **Lodge Brothers**
LEGAL SERVICES

Expert Help From The Family You Can Turn To

www.lodgebrotherslegalservices.co.uk

WHATS ON

Roehampton R.O.C.K.S

Xmas Day CookOut!

25 December 2022 from **2pm**
Jingle Jingle let's all mingle!
Multicultural festive dishes for everyone.

Location: **Alton Activity Centre**
Ellisfield drive SW15 4DR
To help source food or cook,
and to book your place please
call **Orode on 07492501791**

ONGOING:

Putney School of Arts

are running free adult art classes
on **Thursdays** from **1.30pm**
at **Alton Activity Centre**
Ellisfield drive SW15 4DR

DECEMBER 2022

20th December - Elves

Family Theatre Show 3+
Free show. No Booking required.

2.00 pm Alton Activity Centre,
Ellisfield Drive

4.30 pm Lennox Clubroom,
Ludovick Walk

29th December - Elves

Family Theatre Show 3+
Free show. No Booking required.
11 am Eastwood Children's Centre,
166 Roehampton Lane

Info Stall

For up to date information on
What's on in Roehampton
Every Friday from **2.00 - 4.00 pm**
outside the **Base Youth Club** on
Danebury Avenue

JANUARY 2023

Roehampton Women's Network Coffee Morning

There will be a break over the
Christmas Holiday - please join us
again for our free Coffee Morning
from **Wednesday 11 January 2023**

Family Crafting every **Thursday**
starting **12th January**
Free. No Booking required.
3.30 pm **Portswood Space**,
4 Portswood Place

Info Stall returns 27th January

For up to date information on
What's on in Roehampton
Every Friday from **2.00 - 4.00 pm**
outside the **Base Youth Club**
on **Danebury Avenue**

FEBRUARY 2023

Family Crafting every **Thursday**.
Free. No Booking required.
3.30 pm **Portswood Space**,
4 Portswood Place

Info Stall

For up to date information on
What's on in Roehampton
Every Friday from **2.00 - 4.00 pm**
outside the **Base Youth Club**
on **Danebury Avenue**

MARCH 2023

Family Crafting every **Thursday**.
Free. No Booking required.
3.30 pm **Portswood Space**,
4 Portswood Place

Info Stall

For up to date information on
What's on in Roehampton
Every Friday from **2.00 - 4.00 pm**
outside the **Base Youth Club**
on **Danebury Avenue**

Jellyfish Theatre presents **Elves** Free

Family Theatre Show

Alton Activity Centre
Ellisfield Drive, SW15 4DR
Tues 20 Dec, 2pm

Lennox Community Clubroom
Ludovick Walk, SW15 5LE
Tues 20 Dec, 4.30pm

Eastwood Children's Centre
166 Roehampton Lane
Thurs 29 Dec, 11am

Age 3+

No booking needed, just show up!

Supported by Wandsworth Borough Council

Scan QR code for more dates

FAMILY CHRISTMAS PARTY

FOR FAMILIES WHO HAVE A CHILD WITH AN ADDITIONAL NEED

Wednesday 21st December

Come along to our family Christmas Party!
1.45pm - 4:15pm
at the **George Shearing Centre**

DJ Disco
face painting
balloon modelling
buffet

To book your family's place click on the link below



REPAIR CAFE
MONTHLY, EVERY 2ND SATURDAY
10.00am - 12:00pm
ST MARY'S CHURCH, SW15 1SN



Bring any item
to repair -
furniture,
electrical,
clothing etc.

One of our
friendly team
will help you
repair and
re-use

